



**art.collection®**  
**castelli®**  
**comforto®**  
**dyes®**

# Colour your office world

Farben und Materialien laden ein zur Inspiration und Gestaltung. Farben erzeugen Gefühle und sollen motivieren. In dieser Broschüre sind eine Vielzahl von Stoffen, Leder, Melaminoberflächen und hochwertigen Furnieren sowie Glas und spezielle Materialien naturgetreu abgebildet. Hier finden Sie viele Anregungen, die Ihnen helfen, Ihren Raum und Büro zu gestalten.

Colours and materials stimulate inspiration and creativity. Colours generate emotions and are intended to motivate. This brochure contains true-to-life illustrations of numerous fabrics, leather finishes, melamine surfaces and high quality veneers, as well as glass and other special materials. Packed with ideas, it will help you create the perfect working environment.

Une large palette de couleurs et de matériaux vous incitera à développer votre inspiration et votre imagination. Séduisantes, ces finitions suscitent l'émotion. Cette brochure présente une large gamme de tissus, de cuirs, de mélamines, de placages de qualité supérieure ainsi que du verre et des matériaux spéciaux. Tous ont été reproduits dans le souci d'une fidélité extrême à la réalité. Vous y trouverez de nombreuses idées d'aménagement pour créer de parfaits environnements de travail.

Kleuren en materialen nodigen uit tot inspiratie en vormgeving. Kleuren wekken gevoelens op en moeten motiveren. In deze brochure is een groot aantal stoffen, leersoorten, melamine-oppervlakken en hoogwaardige fineersoorten alsmede glas en speciale materialen zo afgebeeld, zoals ze er in het echt uitzien. Hier vindt u talrijke suggesties die u helpen vorm te geven aan uw kamer en kantoor.



## Seating Collection

Sitzmöbel - Sièges - Zitmeubel \_\_\_\_\_ 04

## Furniture Collection

Büromöbel - Meubles de bureau - Bureaumeubel \_\_\_\_\_ 28

## Partitioning Collection

Wandsysteme - Séparation d'espaces - Wandsystemen \_\_\_\_\_ 36

**Management Collection** \_\_\_\_\_ 44

# Seating Collection Seating Collection



s\_con



System X-66



System 76



m\_sit



Hello



System X-88

Die Polsterung von Sitzmöbeln, die ständig stark beansprucht werden, stellt besondere Anforderungen an das eingesetzte Material. Mehrere Kollektionen widerstandsfähiger Textilien und Leder, die gleichzeitig angenehme Haptik und ansprechende Optik bieten, stehen Ihnen zur Verfügung.

The upholstery on seating furniture is constantly facing heavy wear and tear, and therefore imposes special requirements for fabrics, leather and other material used. You can choose between several collections of hard-wearing fabric and leather finishes, which combine comfortable haptic properties with an attractive appearance.

Le revêtement des sièges, soumis en permanence à de nombreuses contraintes physiques, implique des exigences spécifiques en fonction du matériau employé. Plusieurs collections de tissus et de cuirs résistants vous sont proposées. Ces collections offrent à la fois un toucher agréable et un aspect séduisant.

De bekleding van zitmeubels die het voortdurend zwaar te verduren hebben, stelt hoge eisen aan het toepaste materiaal. Meerdere collecties van robuuste textiel- en leersoorten staan u ter beschikking. Ze voelen goed aan en maken tevens optisch een goede indruk.



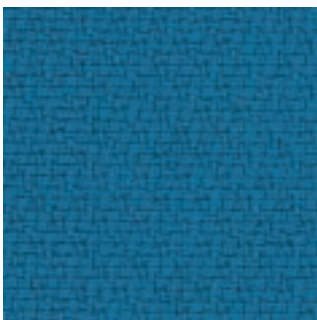
30/0051



30/0201



30/0101



30/0351



30/0301



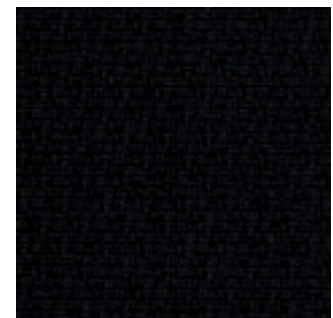
30/0452



30/0451



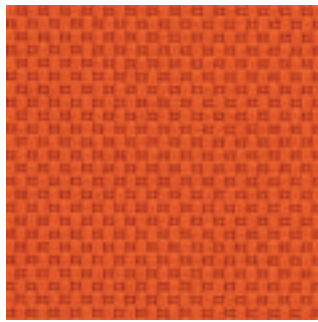
30/0601



30/0651



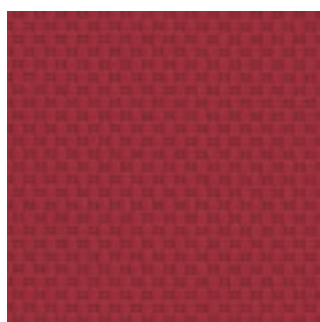
34/0050



34/0063



34/0060



34/0066



34/0074



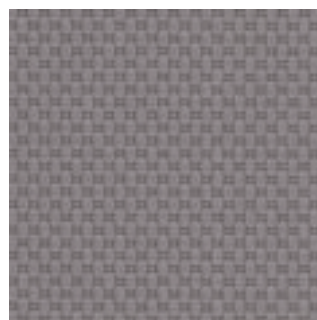
34/0073



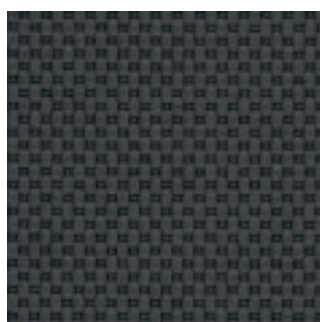
34/0090



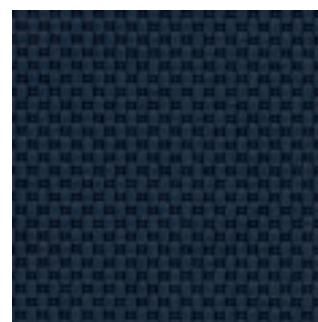
34/0021



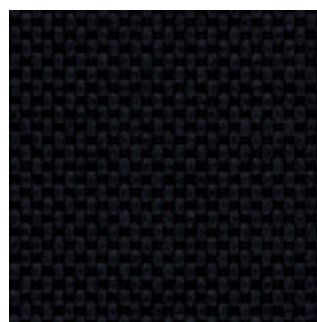
34/0020



34/0014



34/0071



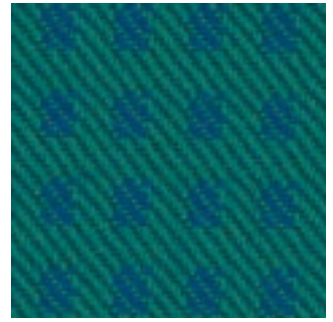
34/0010



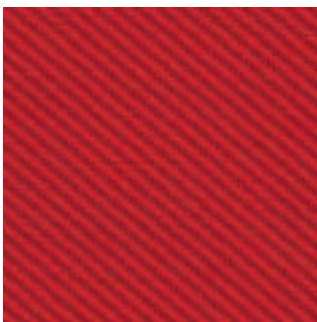
31/0636



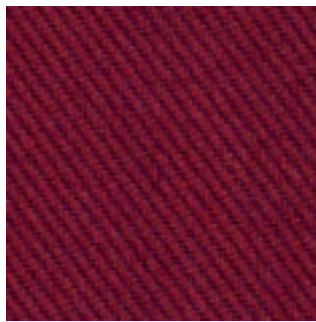
31/0066



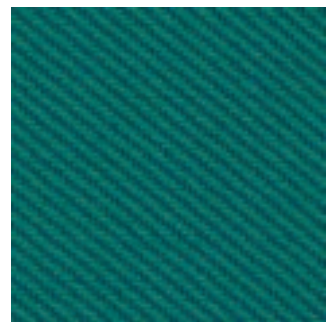
31/0092



31/6360



31/6600



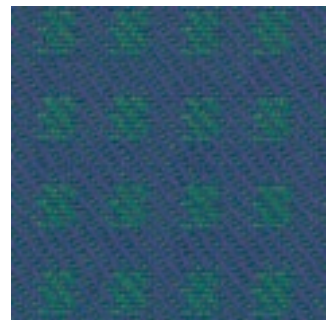
31/9200



31/0071



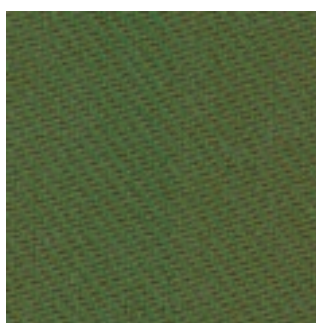
31/0933



31/0733



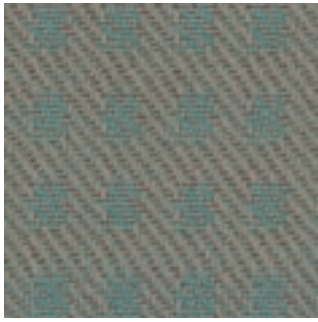
31/7100



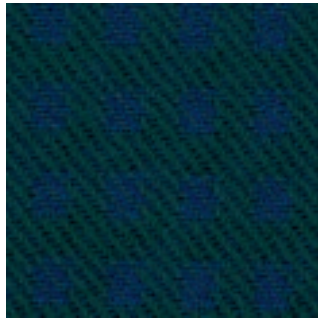
31/9330



31/7330



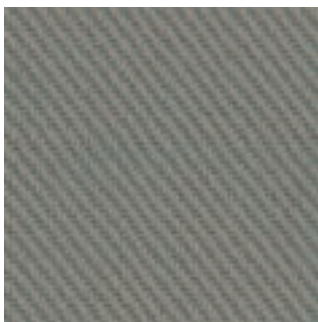
31/0024



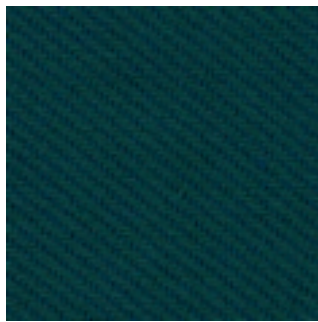
31/0910



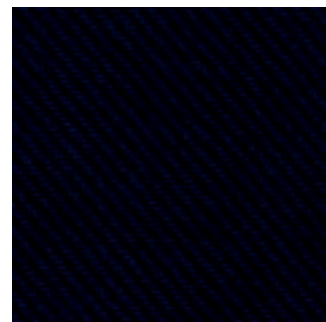
31/0013



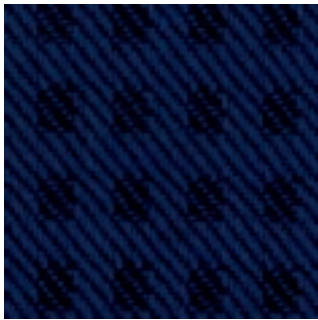
31/2400



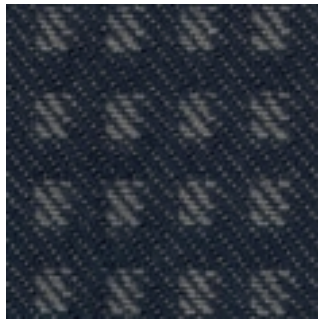
31/9100



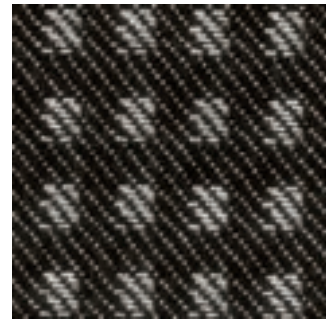
31/1300



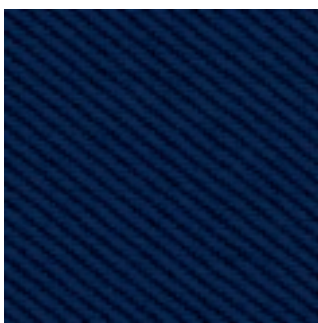
31/0077



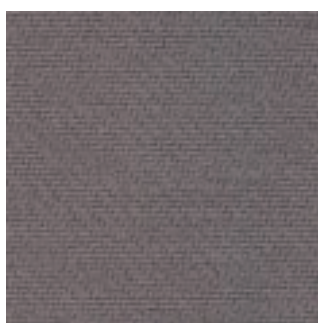
31/0116



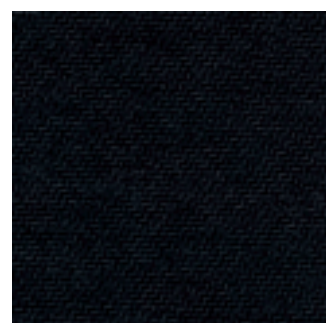
31/0113



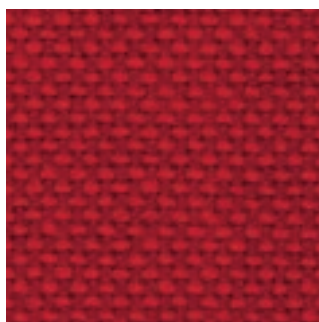
31/7700



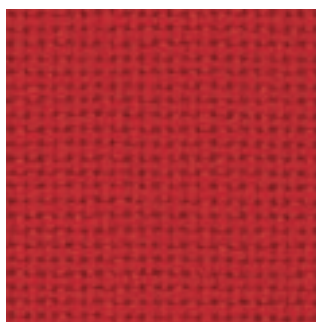
31/2000



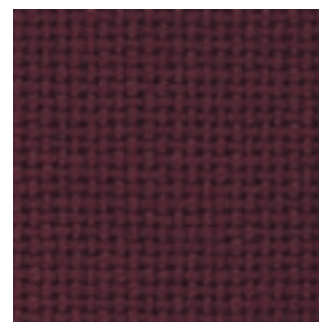
31/0010



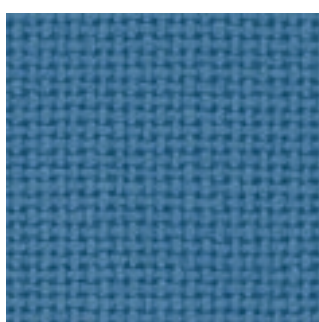
12/0008



12/0009



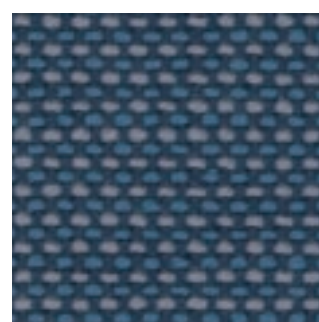
12/0097



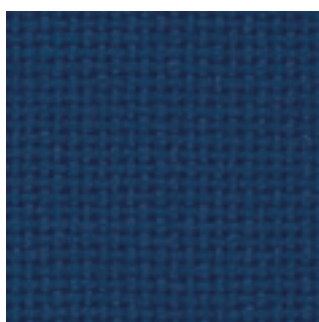
12/0076



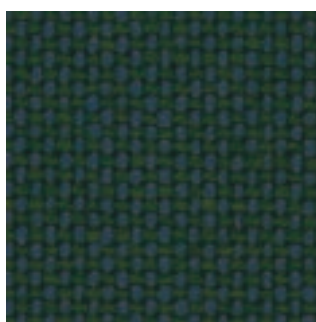
12/0077



12/0019



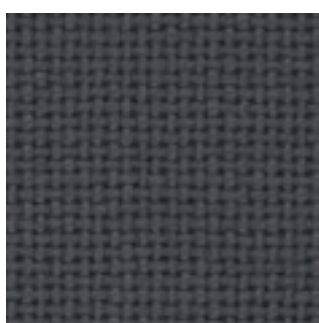
12/0018



12/0030



12/0040



12/0051



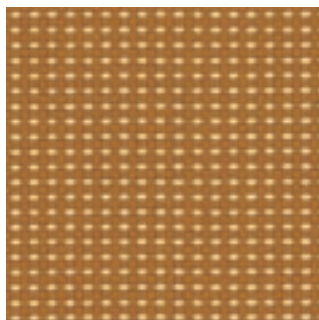
12/0031



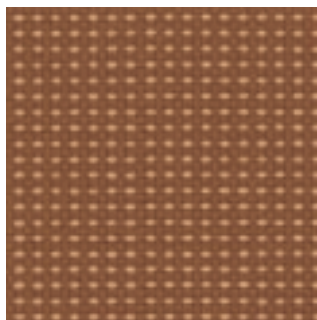
12/0041

**Collection 35**

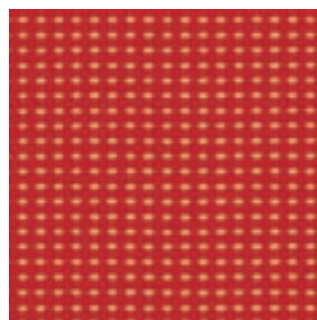
Preisgruppe 1 | Price group 1 | Groupe de prix 1 | Prijsgroep 1



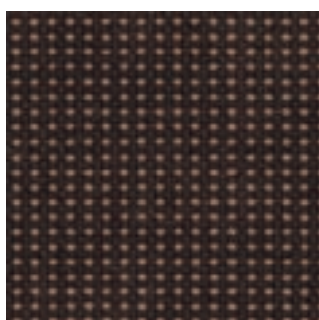
35/0050



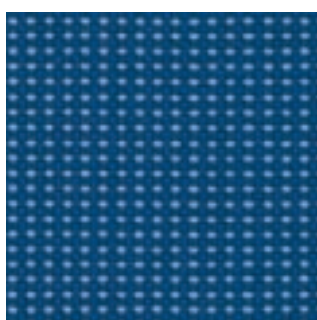
35/0041



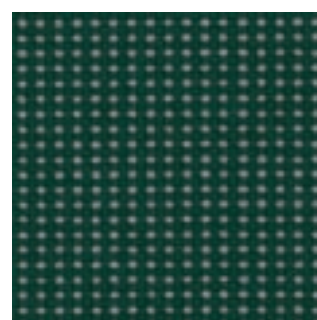
35/0060



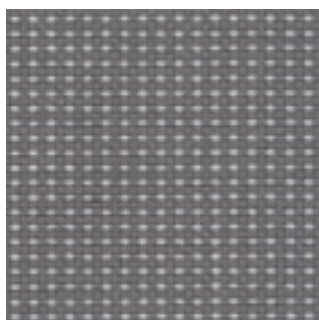
35/0040



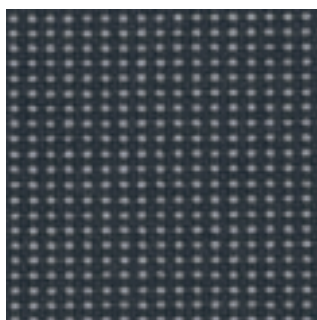
35/0070



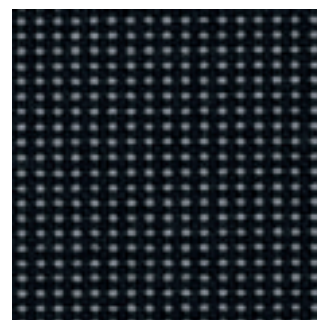
35/0091



35/0020



35/0012



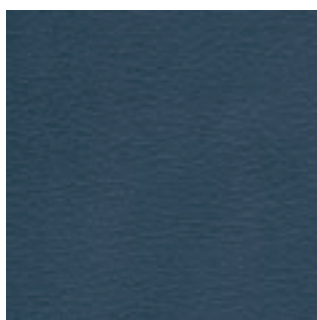
35/0011

**Collection 37**

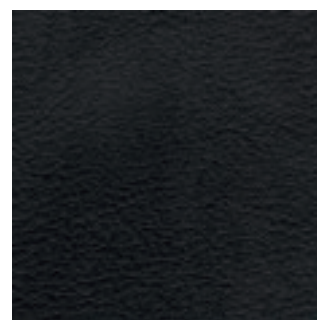
Preisgruppe 1 | Price group 1 | Groupe de prix 1 | Prijsgroep 1



37/0713



37/0714



37/0085



82/0072



82/0097



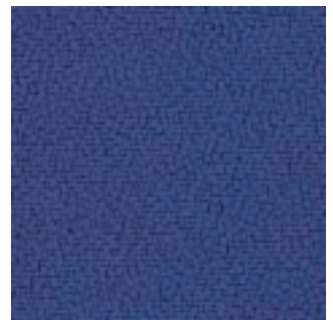
82/0030



82/0095



82/0073



82/0021



82/0096



82/0077



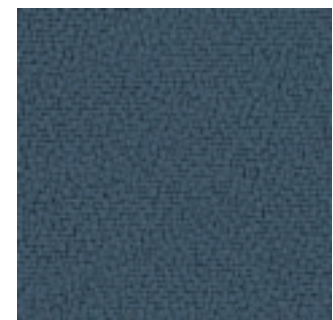
82/0074



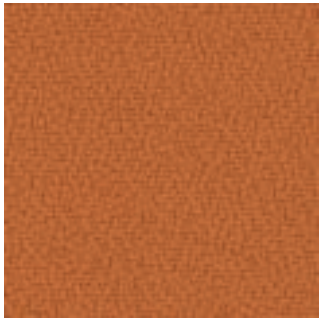
82/0011



82/0045



82/0083



82/0075



82/0076



82/0079



82/0004



82/0005



82/0082



82/0024



82/0026



82/0084



82/0094



82/0081



82/0009

System X-99



System X-99



Se04



System 77

System 55

System 03



q\_bic



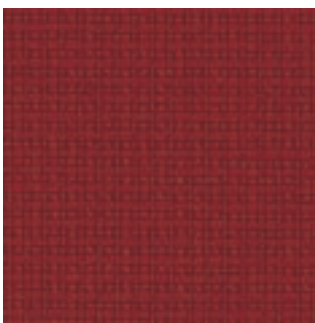
39/2043



39/3016



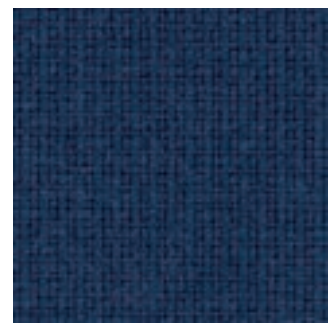
39/4089



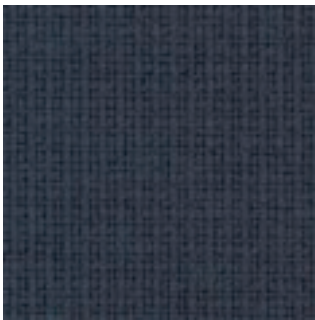
39/1061



39/6032



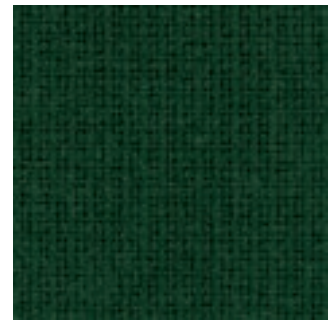
39/6071



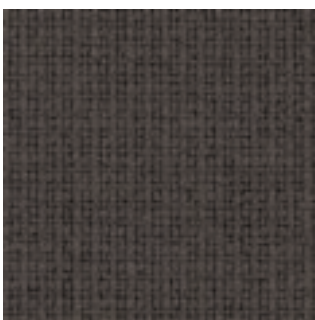
39/0017



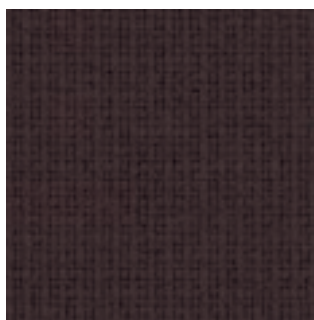
39/8004



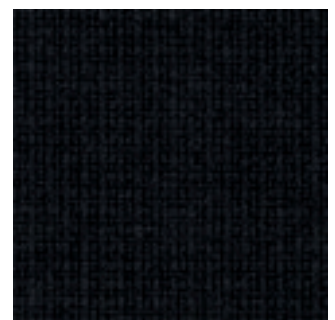
39/7044



39/1060



39/1025



39/0999



86/0055



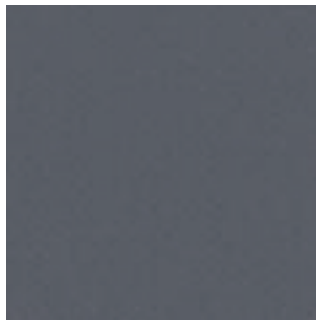
86/0102



86/0207



86/0255



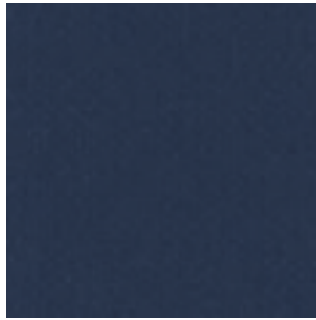
86/0610



86/0311



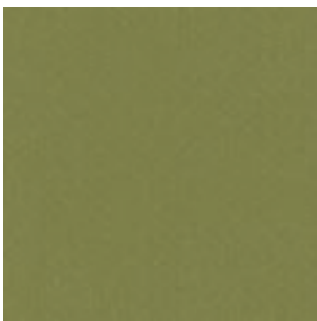
86/0312



86/0313



86/0651



86/0476



86/0477



86/0604

**Collection 84**

Preisgruppe 3 | Price group 3 | Groupe de prix 3 | Prijsgroep 3



84/0001



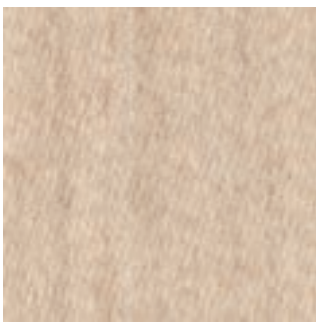
84/0003



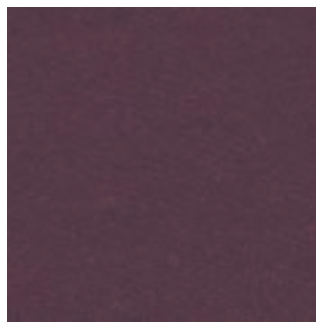
84/0006

**Collection 87**

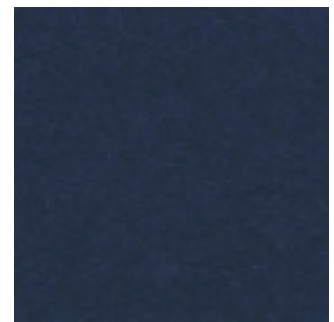
Preisgruppe 5 | Price group 5 | Groupe de prix 5 | Prijsgroep 5



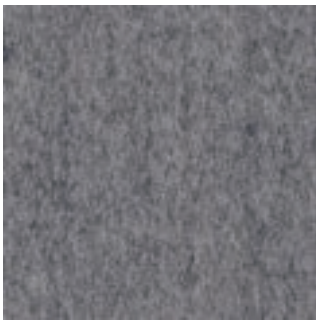
87/0030



87/0060



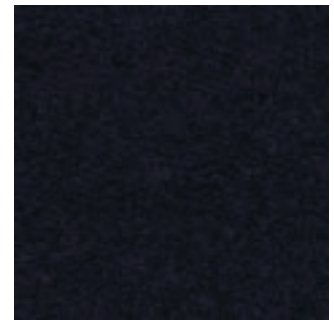
87/0072



87/0062



87/0065



87/0090



88/0437



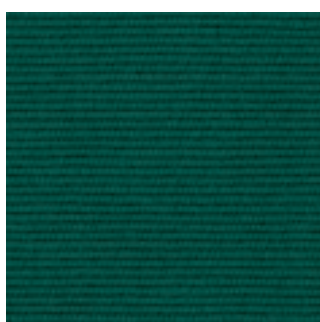
88/0447



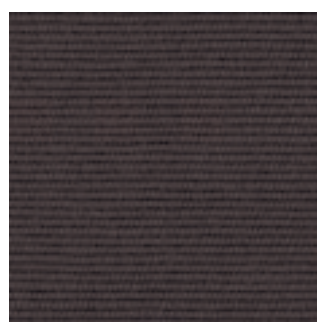
88/0616



88/0827



88/0877



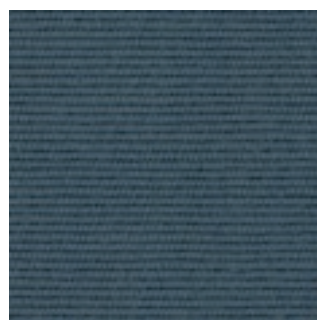
88/0387



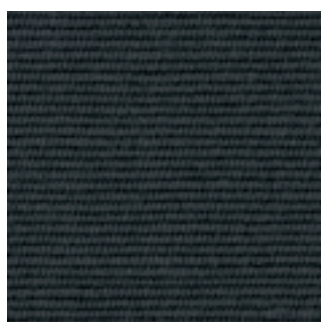
88/0696



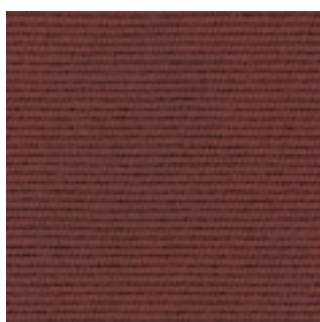
88/0796



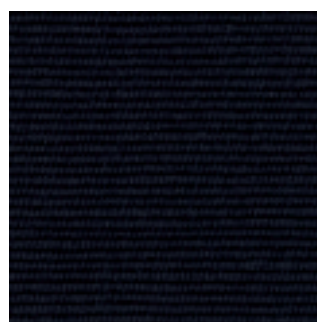
88/0856



88/0176



88/0367



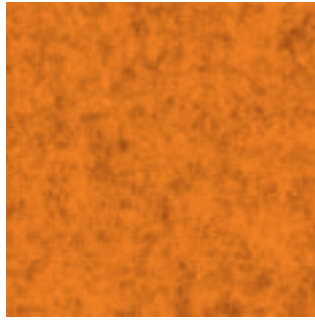
88/0196

**Collection 89**

Preisgruppe 6 | Price group 6 | Groupe de prix 6 | Prijsgroep 6



89/0921



89/0521



89/0531



89/0120



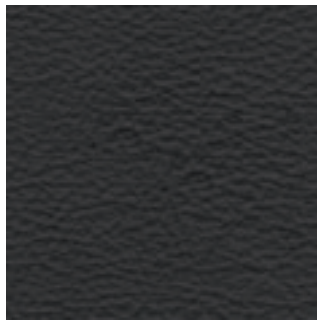
89/0260



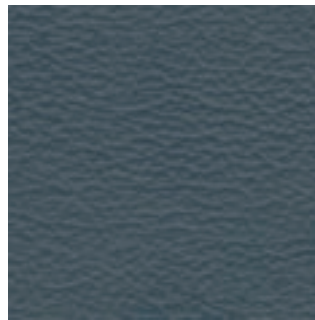
89/0180

**Collection 99**

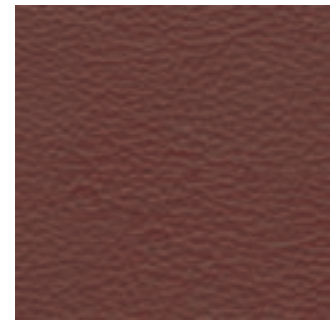
Preisgruppe 7 | Price group 7 | Groupe de prix 7 | Prijsgroep 7



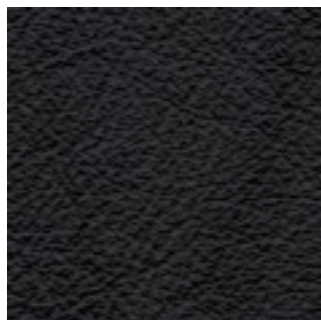
99/0100



99/0400



99/0906



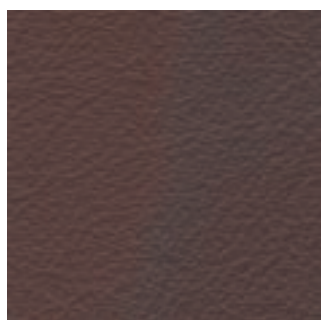
97/7360



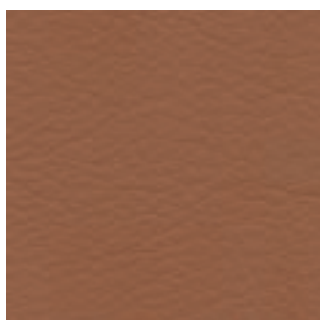
97/7370



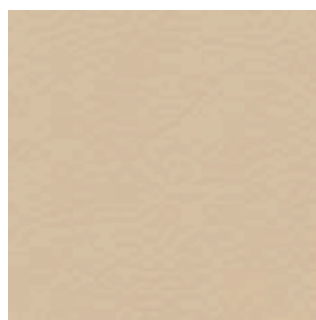
97/7310



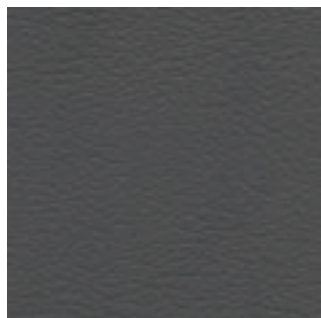
97/7388



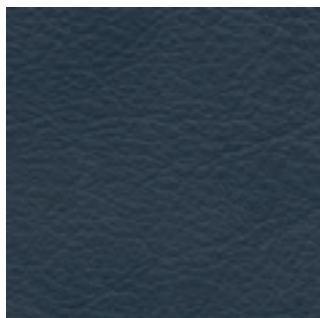
97/7384



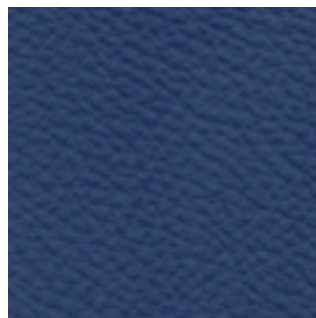
97/7371



97/7355



97/7321



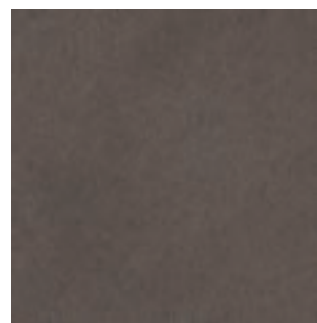
97/7328



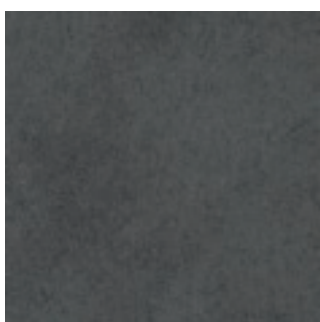
95/0220



95/0610



95/0960



95/0180

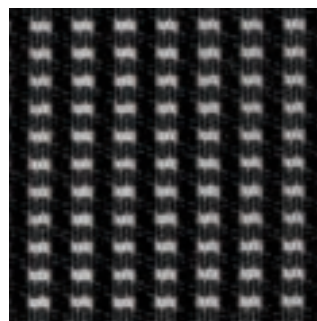
**Collection 47**



47/0020

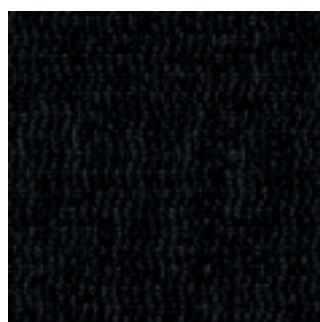


47/0312

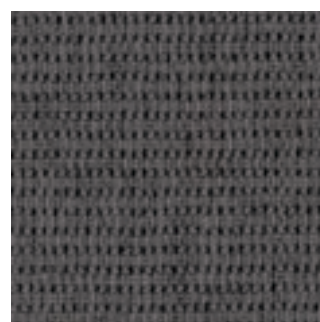


47/0010

**Collection 47/0400**



47/0401



47/0402

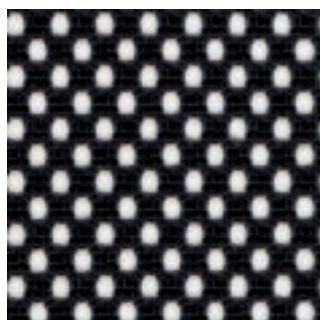


47/0403



47/0404

**Collection 47/0500**



47/0500

**Gestelle Stühle / Chair bases / Piétements de sièges / Stoelen onderstel**

**Chrom**  
Chrome  
Chromé  
Verchromd

**Alu Poli**  
Alu Polished  
Alu Poli  
Alu Gepolijst

**Schwarz**  
Black  
Noir  
Zwart



**Silbermetallic**  
Silver Metallic  
Gris Argent Métallisé  
Zilver





System 03



System X-88



s\_con



m\_sit

Collection	Zusammensetzung composition composition samenstelling	Breite Width Largeur breedte	Gewicht Weight Poids gewicht	12 Kpa Scheuerverhalten Abrasion resistance Résistance à l'abrasion scheurvastheid	ISO 105 - B02: 1996 Lichtechtheit Light fastness Résistance à la lumière lichtechtheid	ISO 105 - X12: 1995 Reibechtheit Fastness to rubbing Résistance aux frottements wrijfbestendigheid
30	100 % Polypropylene FR 100 % Polypropylene FR 100 % Polypropylène FR 100 % Polypropylène FR	140 cm	~ 350 g/lfdm ~ 350 g/per linear metre ~ 350 g/ml ~ 350 g/per m	Martindale 45.000 Touren Martindale 45.000 cycles Martindale 45.000 tours Martindale 45.000 toeren	5	4-5
34	100 % Polyester 100 % Polyester 100 % Polyester 100 % polyester	140 cm	~ 560 g/lfdm ~ 560 g/per linear metre ~ 560 g/ml ~ 560 g/per m	Martindale 50.000 Touren Martindale 50.000 cycles Martindale 50.000 tours Martindale 50.000 toeren	5-7	4-5 trocken und nass 4-5 dry and wet 4-5 sec et humide 4-5 droog en nat
31	100 % Polyacryl 100 % Polyacryl 100 % Polyacryl 100 % polyacryl	140 cm	~ 430 g/lfdm ~ 430 g/per linear metre ~ 430 g/ml ~ 430 g/per m	Martindale 40.000 Touren Martindale 40.000 cycles Martindale 40.000 tours Martindale 40.000 toeren	4-6	4-5 trocken und nass 4-5 dry and wet 4-5 sec et humide 4-5 droog en nat
12	100 % Polyester (Trevira CS) 100 % Polyester (Trevira CS) 100 % Polyester (Trevira CS) 100 % Polyester (Trevira CS)	140 cm	~ 630 g/lfdm ~ 630 g/per linear metre ~ 630 g/ml ~ 630 g/per m	Martindale 50.000 Touren Martindale 50.000 cycles Martindale 50.000 tours Martindale 50.000 toeren	5-7	4-5 trocken und nass 4-5 dry and wet 4-5 sec et humide 4-5 droog en nat
35	81 % Polyacryl, 19 % Polyester 81 % Polyacryl, 19 % Polyester 81 % Polyacryl, 19 % Polyester 81 % Polyacryl, 19 % Polyester	140 cm	~ 480 g/lfdm ~ 480 g/per linear metre ~ 480 g/ml ~ 480 g/per m	Martindale 40.000 Touren Martindale 40.000 cycles Martindale 40.000 tours Martindale 40.000 toeren	5-7	4-5 trocken und nass 4-5 dry and wet 4-5 sec et humide 4-5 droog en nat
37	100 % Kunstleder 100 % Artif. leather 100 % Simili-cuir 100 % kunstleder	137 cm	~ 990 g/lfdm ~ 990 g/per linear metre ~ 990 g/ml ~ 990 g/per m			
82	100 % Xtreme FR® 100 % Xtreme FR® 100 % Xtreme FR® 100 % Xtreme FR®	140 cm	~ 465 g/lfdm ~ 465 g/per linear metre ~ 465 g/ml ~ 465 g/per m	Martindale 100.000 Touren Martindale 100.000 cycles Martindale 100.000 tours Martindale 100.000 toeren	6+	4+ trocken und nass 4+ dry and wet 4+ sec et humide 4+ droog en nat
39	95 % Wolle, 5 % Polyamid 95 % Wool, 5 % Polyamide 95 % Laine, 5 % Polyamide 95 % wol, 5 % polyamide	140 cm	~ 600 g/lfdm ~ 600 g/per linear metre ~ 600 g/ml ~ 600 g/per m	Martindale 200.000 Touren Martindale 200.000 cycles Martindale 200.000 tours Martindale 200.000 toeren	4-6	4-5 trocken und nass 4-5 dry and wet 4-5 sec et humide 4-5 droog en nat
86	100 % Wolle 100 % Wool 100 % Laine 100 % wol	150 cm	~ 520 g/lfdm ~ 520 g/per linear metre ~ 520 g/ml ~ 520 g/per m	Martindale 50.000 Touren Martindale 50.000 cycles Martindale 50.000 tours Martindale 50.000 toeren	4-6	4+ trocken und nass 4+ dry and wet 4+ sec et humide 4+ droog en nat
84	100 % Polyester 100 % Polyester 100 % Polyester 100 % Polyester	148 cm	~ 510 g/lfdm ~ 510 g/per linear metre ~ 510 g/ml ~ 510 g/per m	Martindale 65.000 Touren Martindale 65.000 cycles Martindale 65.000 tours Martindale 65.000 toeren	6+	3-5
87	85 % reine Schurwolle, 15% Polyamid 85 % pure new wool, 15% Polyamide 85 % pure laine vierge, 15% Polyamide 85 % wol, 15% polyamide	140 cm	~ 520 g/lfdm ~ 520 g/per linear metre ~ 520 g/ml ~ 520 g/per m	Martindale 100.000 Touren Martindale 100.000 cycles Martindale 100.000 tours Martindale 100.000 toeren	5	3-5
88	94 % Schurwolle, 6 % Nylon 94 % pure new wool, 6 % Nylon 94 % pure laine vierge, 6 % Nylon 94 % zuivere scheerwol, 6 % nylon	150 cm	~ 690 g/lfdm ~ 690 g/per linear metre ~ 690 g/ml ~ 690 g/per m		5	4
89	100 % Schurwolle 100 % pure new wool 100 % pure laine vierge 100 % wol	150 cm	~ 820 g/lfdm ~ 820 g/per linear metre ~ 820 g/ml ~ 820 g/per m	Martindale 45.000 Touren Martindale 45.000 cycles Martindale 45.000 tours Martindale 45.000 toeren	6+	3-5
99	narbenoptimiertes Leder Pigmented leather Cuir naturel leder naturel		Stärke 1,0 - 1,2 mm Thickness 1,0 -1,2 mm Epaisseur 1,0 -1,2 mm materiaaldikte 1,0-1,2mm	Martindale 50.000 Touren Martindale 50.000 cycles Martindale 50.000 tours Martindale 50.000 toeren	4-5	4
97	Pigmentiertes Narbenleder Pigmented grain-leather Cuir naturel pigmenté gepigmenteerd leder naturel		Stärke 1,3 - 1,4 mm Thickness 1,3 - 1,4 mm Epaisseur 1,3 - 1,4 mm materiaaldikte 1,3 - 1,4 mm		5+	
95	60 % Nylon, 40 Polyurethan 60 % Nylon, 40 Polyurethane 60 % Nylon, 40 Polyuréthane 60 % Nylon, 40 Polyurethan	130 cm	~ 500 g/lfdm ~ 500 g/per linear metre ~ 500 g/ml ~ 500 g/per m	Martindale 100.000 Touren Martindale 100.000 cycles Martindale 100.000 tours Martindale 100.000 toeren	5	4-5 trocken und nass 4-5 dry and wet 4-5 sec et humide 4-5 droog en nat
47	70 % Polyester, 30 % Polyamid 70 % Polyester, 30 % Polyamide 70 % polyester, 30 % polyamide 70 % polyester, 30 % polyamide	105 cm	~ 360 g/lfdm ~ 360 g/per linear metre ~ 360 g/ml ~ 360 g/per m	Martindale 40.000 Touren Martindale 40.000 cycles Martindale 40.000 tours Martindale 40.000 toeren	5-7	4 trocken und nass 4 dry and wet 4 sec et humide 4 droog en nat
47/ 0500	100 % Polyester 100 % Polyester 100 % Polyester 100 % Polyester	147 cm	~ 510 g/lfdm ~ 510 g/per linear metre ~ 510 g/ml ~ 510 g/per m	Martindale 100.000 Touren Martindale 100.000 cycles Martindale 100.000 tours Martindale 100.000 toeren	6 (für lichtecht)	
47/ 0400	100 % Polyester 100 % Polyester 100 % Polyester 100 % Polyester	130 cm	~ 400 g/lfdm ~ 400 g/per linear metre ~ 400 g/ml ~ 400 g/per m	Martindale 40.000 Touren Martindale 40.000 cycles Martindale 40.000 tours Martindale 40.000 toeren	4	4 trocken und nass 4 dry and wet 4 sec et humide 4 droog en nat



Epure



Tutti Light



3D

Mit der Furniture Collection gestalten Sie Ihren individuellen Büroarbeitsplatz. Eine Vielfalt an Oberflächen aus Echtholz, Melamin, Metall und Textilien lädt dazu ein, ein harmonisches Büroambiente zu gestalten, Akzente zu setzen und inspirierende Atmosphäre zu schaffen.

The Furniture Collection offers you a means of creating an office workplace that fulfils your individual needs and wishes. A wide range of genuine wood, melamine, metal and fabric finishes provides the basic prerequisite for a harmonious office environment and enable you to set accents and generate an inspirational atmosphere.

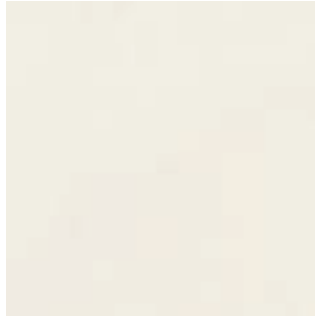
La gamme Furniture Collection vous permet de personnaliser votre poste de travail. Un large choix d'ébénisteries, mélamines, métaux et tissus, vous invite à concevoir une atmosphère de bureau particulièrement harmonieuse et à promouvoir des ambiances qui seront source d'inspiration.

Hier in de Furniture Collection geeft u vorm aan uw geheel eigen kantoorwerkplek. Een grote verscheidenheid van oppervlakken die gemaakt zijn van fineer, melamine, metaal en textiel nodigt ertoe uit een harmonische kantoorambiance te creëren, accenten te plaatsen en een inspirerende sfeer te scheppen.

## Melamin-Oberflächen / Melamine / Mèlamine / Melamine



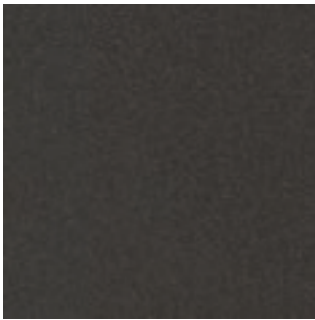
**Melamine White EC**  
 Melamin Weiss EC  
 Mèlamine Blanc EC  
 Melamine Wit EC



**Melamine Light Grey EC**  
 Melamin Pastellgrau EC  
 Mèlamine Gris Clair EC  
 Melamin Pastelgrijs EC



**Melamine Silver EC**  
 Melamin Silber EC  
 Mèlamine Gris Mètal EC  
 Melamine Zilver EC



**Melamine Dark Grey EC**  
 Melamin Anthrazit EC  
 Mèlamine Antracite EC  
 Melamine Antraciet EC



**Melamine Maple EC**  
 Melamin Ahorn Hell EC  
 Mèlamine Erable EC  
 Melamine Ahorn EC



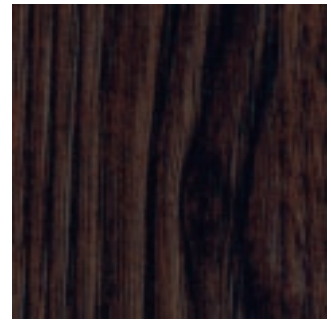
**Melamine Natural Beech EC**  
 Melamin Buche Hell EC  
 Mèlamine Hêtre Naturel EC  
 Melamine Beuken Licht EC



**Melamine Alder EC**  
 Melamin Erle EC  
 Mèlamine Aulne EC  
 Mèlamine Elzen EC



**Melamine Steamed Beech EC**  
 Melamin Buche Gedàmpft EC  
 Mèlamine Hêtre Doré EC  
 Melamine Beuken Gestoomd EC



**Melamine Oak Mocca EC**  
 Melamin Eiche Mocca EC  
 Mèlamine Chêne Mokka EC  
 Melamine Eiken Mokka EC

## Furnier-Oberflächen / Natural Veneer / Bois Naturel Érable / Fineer



**Maple EC**  
 Ahorn '05 EC  
 Erable EC  
 Ahorn EC



**Beech EC**  
 Buche Natur '98 EC  
 Hêtre Naturel EC  
 Beuken Natuur EC



**Cherry EC**  
 Kirschbaum '05 EC  
 Merisier Naturel EC  
 Kersen EC

**Furnier-Oberflächen / Natural Veneer / Ebénisterie / Fineer**



**Walnut EC**  
Nussbaum '05 EC  
Noyer EC  
Walnoot EC



**Wenge EC**  
Wenge Design '05 EC  
Wengué EC  
Wenge EC

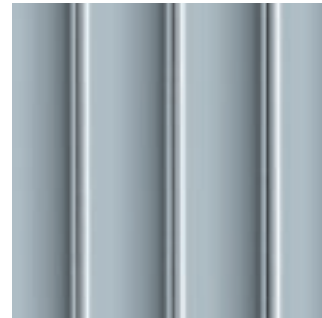
**Rolladen / Tambour Doors / Rideau / Jaloziendeur**



**White EC**  
Weiss EC  
Blanc EC  
Wit EC



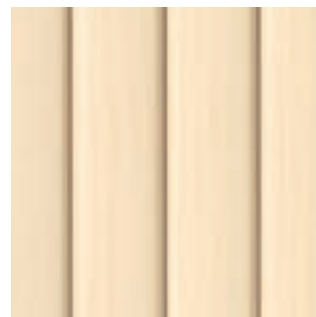
**Light Grey EC**  
Pastellgrau EC  
Gris Clair EC  
Pastelgrijs EC



**Silver EC**  
Silber EC  
Gris Métal EC  
Zilver EC



**Dark Grey EC**  
Anthrazit EC  
Antracite EC  
Antraciet EC



**Maple EC**  
Ahorn Hell EC  
Erable EC  
Ahorn EC



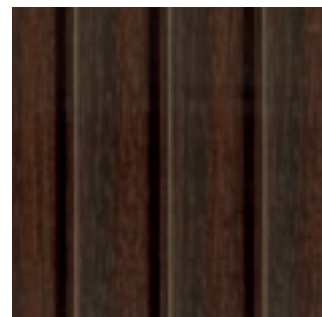
**Natural Beech EC**  
Buche Hell EC  
Hêtre Naturel EC  
Beuken Licht EC



**Alder EC**  
Erle EC  
Aulne EC  
Elzen EC



**Steamed Beech EC**  
Buche Gedämpft EC  
Hêtre Doré EC  
Beuken Gestoomd EC



**Oak Mocca EC**  
Eiche Mocca EC  
Chêne Mokka EC  
Eiken Mokka EC

TUTTI TF



NewCity Box



K22

TC 4000

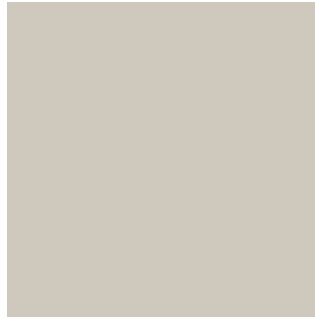


LINE 19

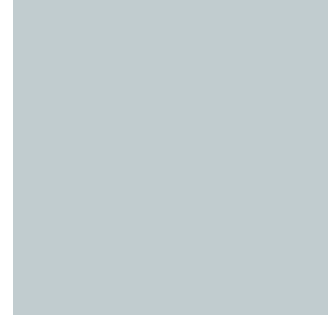
## Metall-Oberflächen / Metal / Métal / Metaal



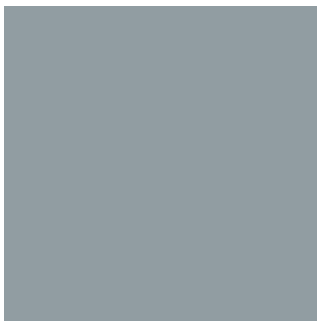
**White (RAL 9010) EC**  
Weiss (RAL 9010) EC  
Blanc EC  
Wit EC



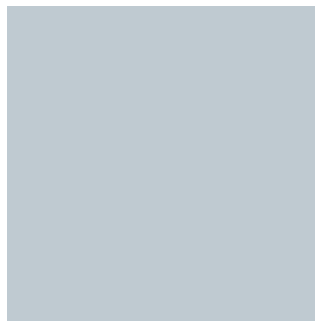
**Light Grey EC**  
Lichtgrau EC  
Gris Clair EC  
Lichtgrijs EC



**Aluminium Light Silver EC**  
Silber Hell EC  
Aluminium Light EC  
Zilver EC



**Aluminium Medium Silver EC**  
Silber Medium EC  
Aluminium Medium EC  
Zilver Medium EC



**Anodized Aluminium EV6**  
Astralsilber  
Gris Astral  
Astraalzilver



**Charcoal EC**  
Schwarzgrau EC  
Anthracite EC  
Zwart/Grijs EC



HC1/C3



UNICO

P.O.S.



# Partitioning Collection



Esedra



Anyway Up

DIN 54020 Schweißechtheit Fastness to perspiration Résistance à la sueur zweetbestendigheid	DIN 54005 Wasserechtheit Fastness to water Résistance à l'eau waterbestendigheid	DIN 54024 Trockenreinigungsechtheit Fastness to dry cleaning Résistance au nettoyage à sec chemisch reinigen	Brandverhalten Flame resistance Résistance au feu Brandvastheid	Reinigungsanleitung Maintenance/Cleaning Nettoyage Reinigingsadvies
5	5	5	DIN 4102, B1 + DIN EN 1021 > Teil 1+2 // part 1+2 // partie 1+2, M1 // deel 1+2 (Zigarettestest // cigarette test // essai à la cigarette // sigarettentest)	absaugen/abbürsten, Trockenschäumreinigung // vacuum cleaning/brushing, cleaning with dry foam // aspirer/brosser, nettoyage à la mousse sèche // afzuigen/afborstelen, schoonmaken met droogschuim
4-5 sauer und alkalisch 4-5 acid and alkaline 4-5 acide et alcalin 4-5 zuur en alkaline		4-5	DIN 4102, B1 + DIN EN 1021 > Teil 1+2 // part 1+2 // partie 1+2, M1 // deel 1+2 (Zigarettestest // cigarette test // essai à la cigarette // sigarettentest)	absaugen/abbürsten, Trockenschäumreinigung // vacuum cleaning/brushing, cleaning with dry foam // aspirer/brosser, nettoyage à la mousse sèche // afzuigen/afborstelen, schoonmaken met droogschuim
4-5 sauer und alkalisch 4-5 acid and alkaline 4-5 acide et alcalin 4-5 zuur en alkaline	4-5	4-5	D-DIN EN 1021 > Teil 1 // part 1 // partie 1 // deel 1 (Zigarettestest // cigarette test // essai à la cigarette // sigarettentest)	absaugen/abbürsten, Trockenschäumreinigung // vacuum cleaning/brushing, cleaning with dry foam // aspirer/brosser, nettoyage à la mousse sèche // afzuigen/afborstelen, schoonmaken met droogschuim
4-5 sauer und alkalisch 4-5 acid and alkaline 4-5 acide et alcalin 4-5 zuur en alkaline	5	4-5	D-DIN EN 1021 > Teil 1+2 // part 1+2 // partie 1+2, M1 // deel 1+2 (Zigarettestest // cigarette test // essai à la cigarette // sigarettentest)	absaugen/abbürsten, Trockenschäumreinigung // vacuum cleaning/brushing, cleaning with dry foam // aspirer/brosser, nettoyage à la mousse sèche // afzuigen/afborstelen, schoonmaken met droogschuim
4-5 sauer und alkalisch 4-5 acid and alkaline 4-5 acide et alcalin 4-5 zuur en alkaline		4-5	DIN EN 1021:1994-01 > Teil 1 // part 1 // partie 1 // deel 1 (Zigarettestest // cigarette test // essai à la cigarette // sigarettentest)	absaugen/abbürsten, Trockenschäumreinigung // vacuum cleaning/brushing, cleaning with dry foam // aspirer/brosser, nettoyage à la mousse sèche // afzuigen/afborstelen, schoonmaken met droogschuim
4-5 sauer und alkalisch 4-5 acid and alkaline 4-5 acide et alcalin 4-5 zuur en alkaline	4-5	4-5	DIN 4102, B1, DIN EN 1021 > Teil 1+2 // part 1+2 // partie 1+2, M1 // deel 1+2 (Zigarettestest // cigarette test // essai à la cigarette // sigarettentest)	mit feuchtem Tuch abwischen // wipe clean with a damp cloth // essuyez avec une étoffe humide // met vochtige doek afvegen
			DIN 4102, B1, DIN EN 1021 > Teil 1+2 // part 1+2 // partie 1+2, M1 // deel 1+2 (Zigarettestest // cigarette test // essai à la cigarette // sigarettentest)	regelmäßig absaugen, mit feuchtem Tuch abwischen // vacuum regularly, clean with damp cloth // aspirer régulièrement, essuyez avec une étoffe humide // regelmatig stofzuigen, met vochtige doek afvegen
4-5 sauer und alkalisch 4-5 acid and alkaline 4-5 acide et alcalin 4-5 zuur en alkaline	4-5	4-5	DIN EN 1021:1994-01 > Teil 1 // part 1 // partie 1 // deel 1 (Zigarettestest // cigarette test // essai à la cigarette // sigarettentest)	absaugen/abbürsten, Trockenschäumreinigung // vacuum cleaning/brushing, cleaning with dry foam // aspirer/brosser, nettoyage à la mousse sèche // afzuigen/afborstelen, schoonmaken met droogschuim
			DIN 4102, B1, DIN EN 1021 > Teil 1+2 // part 1+2 // partie 1+2, M1 // deel 1+2 (Zigarettestest // cigarette test // essai à la cigarette // sigarettentest)	regelmäßig absaugen, mit feuchtem Tuch abwischen // vacuum regularly, clean with damp cloth // aspirer régulièrement, essuyez avec une étoffe humide // regelmatig stofzuigen, met vochtige doek afvegen
3-5 sauer und alkalisch 3-5 acid and alkaline 3-5 acide et alcalin 3-5 zuur en alkaline	4-5	4-5	DIN 4102, B1, DIN EN 1021 > Teil 1+2 // part 1+2 // partie 1+2, M1 // deel 1+2 (Zigarettestest // cigarette test // essai à la cigarette // sigarettentest)	absaugen/abbürsten, Trockenschäumreinigung // vacuum cleaning/brushing, cleaning with dry foam // aspirer/brosser, nettoyage à la mousse sèche // afzuigen/afborstelen, schoonmaken met droogschuim
3-5 sauer und alkalisch 3-5 acid and alkaline 3-5 acide et alcalin 3-5 zuur en alkaline	4-5	4-5	DIN 4102, B1, DIN EN 1021 > Teil 1+2 // part 1+2 // partie 1+2, M1 // deel 1+2 (Zigarettestest // cigarette test // essai à la cigarette // sigarettentest)	absaugen/abbürsten, Trockenschäumreinigung // vacuum cleaning/brushing, cleaning with dry foam // aspirer/brosser, nettoyage à la mousse sèche // afzuigen/afborstelen, schoonmaken met droogschuim
3-5 sauer und alkalisch 3-5 acid and alkaline 3-5 acide et alcalin 3-5 zuur en alkaline	4-5	4-5	DIN 4102, B1, DIN EN 1021 > Teil 1+2 // part 1+2 // partie 1+2, M1 // deel 1+2 (Zigarettestest // cigarette test // essai à la cigarette // sigarettentest)	absaugen/abbürsten, Trockenschäumreinigung // vacuum cleaning/brushing, cleaning with dry foam // aspirer/brosser, nettoyage à la mousse sèche // afzuigen/afborstelen, schoonmaken met droogschuim
			DIN EN 1021 > Teil 1+2 // part 1+2 // partie 1+2, M1 // deel 1+2	
			DIN EN 1021 > Teil 1+2 // part 1+2 // partie 1+2, M1 // deel 1+2	
			DIN EN 1021 > Teil 1+2 // part 1+2 // partie 1+2, M1 // deel 1+2	
			DIN EN 1021 > Teil 1 // part 1 // partie 1 // deel 1 (Zigarettestest // cigarette test // essai à la cigarette // sigarettentest)	festverspannte Bezüge: absaugen, Reinigung mit Trockenschäum // fixed covers: vacuum cleaning, cleaning with dry foam // housses fixes: aspirer, nettoyage à la mousse sèche // strakgespannen bekleding:stofzuigen, schoonmaken met droogschuim
			DIN EN 1021 > Teil 1 // part 1 // partie 1 // deel 1 (Zigarettestest // cigarette test // essai à la cigarette // sigarettentest)	festverspannte Bezüge: absaugen, Reinigung mit Trockenschäum // fixed covers: vacuum cleaning, cleaning with dry foam // housses fixes: aspirer, nettoyage à la mousse sèche // strakgespannen bekleding:stofzuigen, schoonmaken met droogschuim
4 sauer und alkalisch 4 acid and alkaline 4 acide et alcalin 4 zuur en alkaline			California Bulletin 117 // UFAC // Class 1	festverspannte Bezüge: absaugen, Reinigung mit Trockenschäum // fixed covers: vacuum cleaning, cleaning with dry foam // housses fixes: aspirer, nettoyage à la mousse sèche // strakgespannen bekleding:stofzuigen, schoonmaken met droogschuim

# Furniture Collection



C3



HEXAGON



Hugo



TUTTI



VERTICAL OFFICE

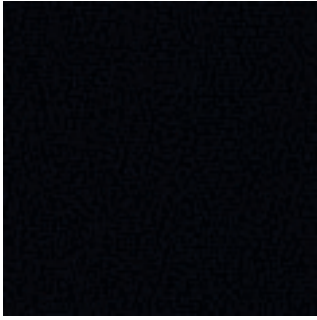
Raum-in-Raum-Lösungen, Trennwände und Raumgliederungselemente – durch gekonnten Materialmix und Farbkombinationen werden motivierende Bürowelten inszeniert. Die vielen Materialien und Farben ermöglichen es, die unternehmerische Identität und Firmenphilosophie zum Ausdruck zu bringen.

Room-in-room solutions, partitions and room-dividing elements – skilfully combined materials and colour schemes produce motivating office worlds. The fast choice on materials and colours offer a means of expressing corporate identity and company philosophy.

Des solutions d'aménagement de type cabinet, des cloisons de séparation et des éléments structurant l'espace : découvrez des univers créatifs, parfaitement mis en scène grâce à l'association réussie des matériaux et à la combinaison esthétique des coloris. La grande diversité des matières et des couleurs proposées vous permettent d'exprimer jusque dans les moindres détails l'identité et la culture de votre entreprise.

Ruimte-in-ruimte-oplossingen, scheidingswanden en elementen voor de uw interieur. Door een juiste materiaalmix en kleurencombinaties worden motiverende kantoorwerelden neergezet. De talrijke materialen en kleuren maken het mogelijk de identiteit van de onderneming en de bedrijfsfilosofie tot uitdrukking te brengen.

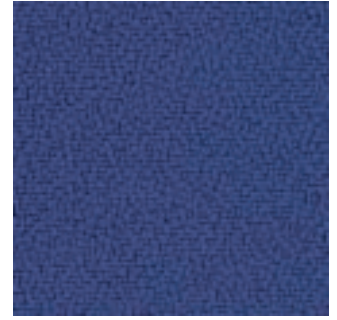
Collection 82



82/0009



82/0084



82/0021



82/0083



82/0081



82/0094



82/0095



82/0073



82/0097



82/0004



82/0082



82/0005



82/0024



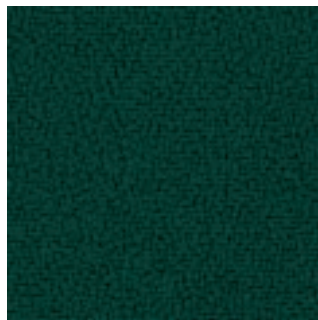
82/0026



82/0011



82/0074



82/0045



82/0096



82/0077



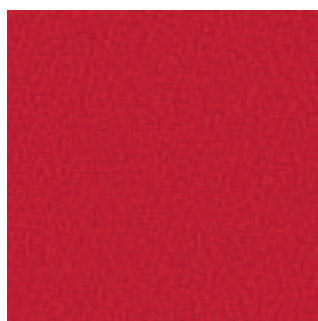
82/0072



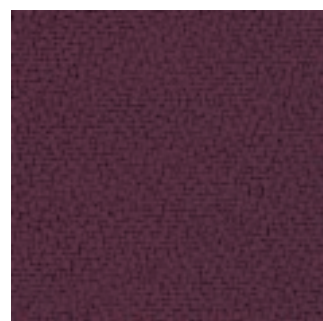
82/0075



82/0076



82/0079

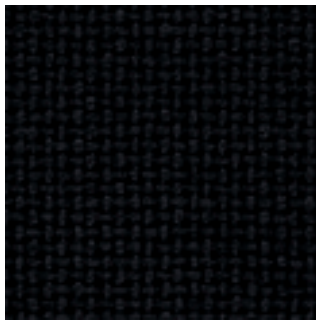


82/0030

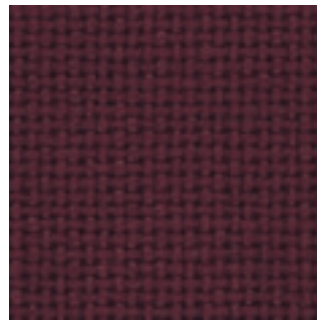
Collection 12



12/0031



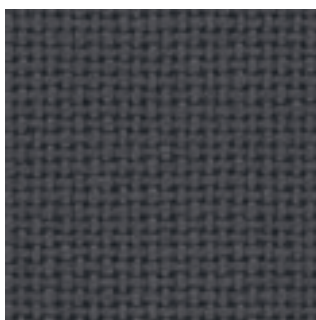
12/0041



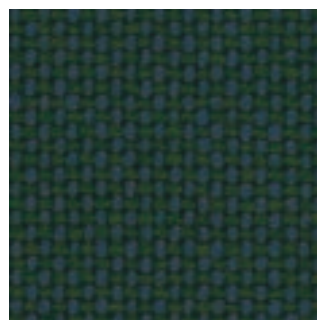
12/0097



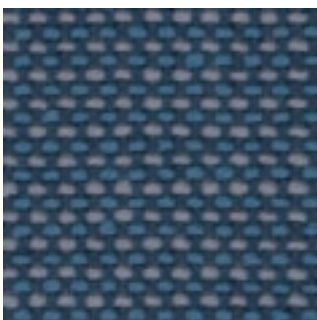
12/0040



12/0051



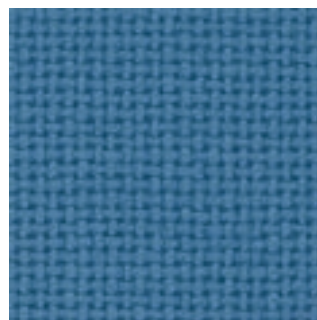
12/0030



12/0019



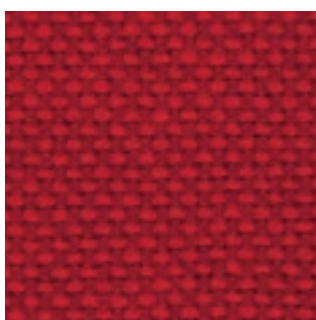
12/0077



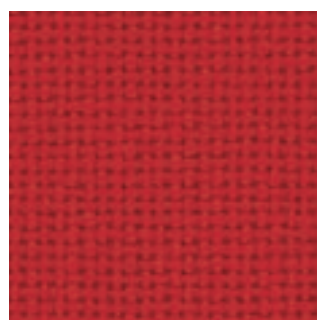
12/0076



12/0018

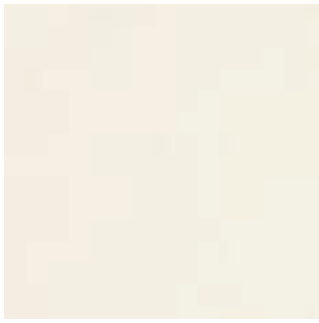


12/0008



12/0009

## Melamin-Oberflächen / Melamine / Mèlamine / Melamine



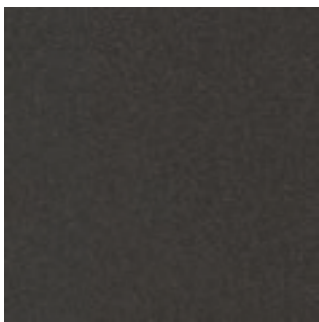
**White EC**  
Melamin Weiss EC  
Mèlamine Blanc EC  
Melamine Wit EC



**Light Grey EC**  
Melamin Pastellgrau EC  
Mèlamine Gris Clair EC  
Melamin Pastelgrijs EC



**Silver EC**  
Melamin Silber EC  
Mèlamine Gris Mètal EC  
Melamine Zilver EC



**Dark Grey EC**  
Melamin Anthrazit EC  
Mèlamine Antracite EC  
Melamine Antraciet EC



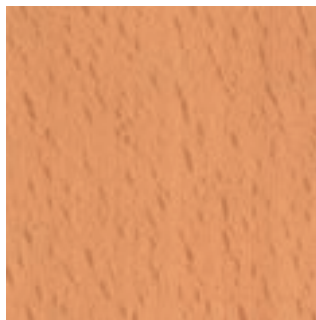
**Maple EC**  
Melamin Ahorn Hell EC  
Mèlamine Erable EC  
Melamine Ahorn EC



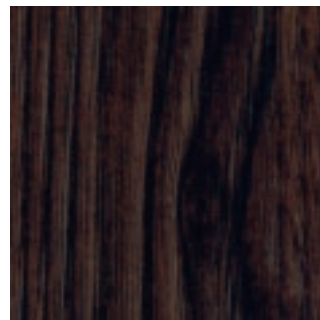
**Natural Beech EC**  
Melamin Buche Hell EC  
Mèlamine Hêtre Naturel EC  
Melamine Beuken Licht EC



**Alder EC**  
Melamin Erle EC  
Mèlamine Aulne EC  
Mèlamine Elzen EC



**Steamed Beech EC**  
Melamin Buche Gedämpft EC  
Mèlamine Hêtre Doré EC  
Melamine Beuken Gestoomd EC



**Oak Mocca EC**  
Melamin Eiche Mocca EC  
Mèlamine Chêne Mokka EC  
Melamine Eiken Mokka EC

## Furnier-Oberflächen / Natural Veneer / Ebénisterie / Fineer



**Maple EC**  
Ahorn '05 EC  
Erable EC  
Ahorn EC



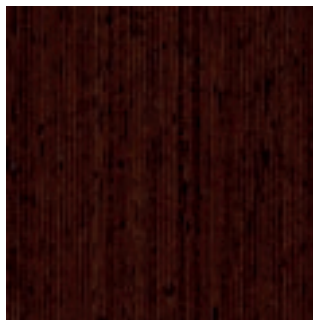
**Beech EC**  
Buche Natur '98 EC  
Hêtre Naturel EC  
Beuken Natuur EC



**Cherry EC**  
Kirschbaum '05 EC  
Merisier Naturel EC  
Kersen EC

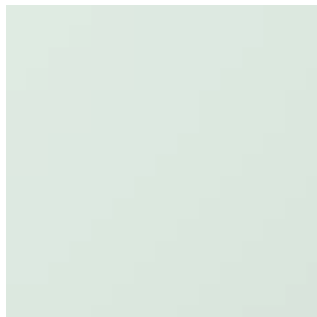


**Walnut EC**  
Nussbaum '05 EC  
Noyer EC  
Walnoot EC

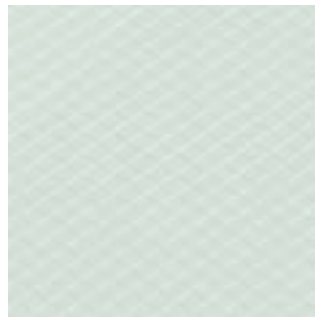


**Wenge EC**  
Wenge Design '05 EC  
Wengué EC  
Wenge EC

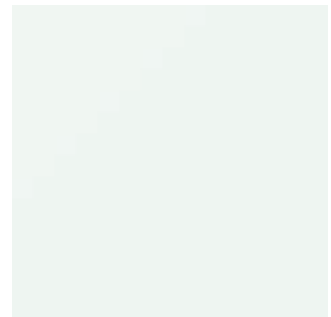
## Oberflächen Glas / Glass / Verre / Glas



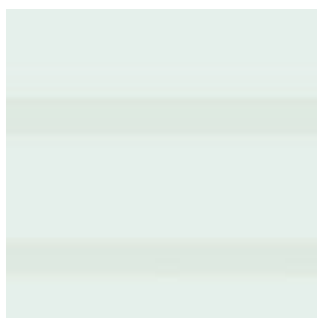
**Milky White**  
Glas Mattiert  
Opale  
Melkwit



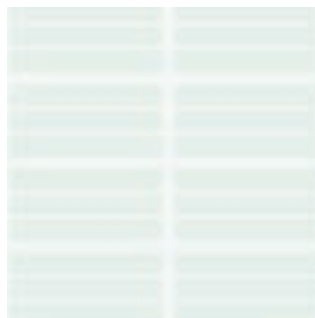
**Mirror**  
Glas mit Spiegeleffekt  
Miroir  
Spiegel



**Clear**  
Glas Klar  
Verre  
Helder



**Glass Patterned**  
Glas Bedruckt  
Sérigraphie  
Gedessineerd



**Glass Printed Tutti Design**  
Glas Tutti Bedruckt  
Sérigraphie Tutti  
Gedessineerd Tutti



TUTTI



TUTTI



Esedra

# Management Collection



Karé



a\_con



m\_pro



Bay



Essence

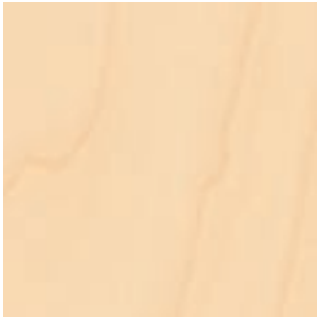
Hochwertige Materialien stehen für ein repräsentatives Management-Ambiente als Ausdruck persönlichen Stils. Dort, wo Entscheidungen getroffen, Ideen geboren und Dialoge geführt werden, da werden Verarbeitungsqualität, Liebe zum Detail und Understatement geschätzt.

High-quality materials are an expression of personal style in a prestigious management environment. Understatement, craftsmanship and loving care for details are appreciated where decisions are made, ideas are born and communication takes place.

Les matériaux haut de gamme sont le reflet d'ambiances managériales prestigieuses. La qualité de la finition, l'amour du détail et l'élégance discrète sont des atouts valorisants, particulièrement appréciés dans les sphères réservées aux négociations, à la naissance d'idées et à la prise de décision.

Hoogwaardige materialen geven uitdrukking aan de persoonlijke stijl van een representatief management. Waar beslissingen worden genomen, ideeën worden geboren en gesprekken worden gevoerd, daar worden kwaliteit, liefde voor het detail en understatement op prijs gesteld.

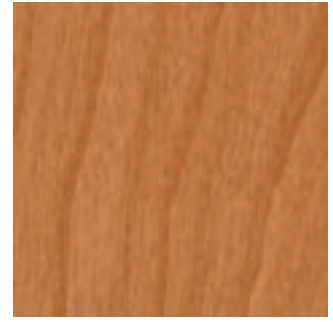
## Furnier-Oberflächen / Natural Veneer / Ebénisterie / Fineer



**Maple EC**  
Ahorn '05 EC  
Erable EC  
Ahorn EC



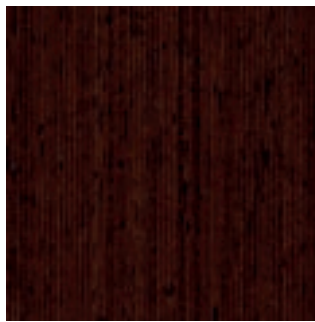
**Beech EC**  
Buche Natur '98 EC  
Hêtre Naturel EC  
Beuken Natuur EC



**Cherry EC**  
Kirschbaum '05 EC  
Merisier Naturel EC  
Kersen EC



**Walnut EC**  
Nussbaum '05 EC  
Noyer EC  
Walnoot EC



**Wenge EC**  
Wenge Design '05 EC  
Wengué EC  
Wenge EC



a\_con conference



a\_con



a\_con conference

# Colour Overview Haworth Europe

Colour Code	Stoffe / Fabric / Tissus / Stof																Gestelle Stühle Chair Bases Piétements de sièges Stoelen onderstel				Melamin / Melamine																									
	30	34	31	12	35	37	82	39	86	84	87	88	89	99	97	95	47/0020 / 47/0312 / 47/0010	47/0401 / 47/0402 / 47/0403 / 47/0404	47/0500	Chrom / Chrome Chromé / Verchroomd	Alu Poliert / Alu Polished Alu Poli / Alu Gepolijst	Schwarz / Black Noir / Zwart	Silbermetallisch / Silver Metallic Gris Argent Métallisé / Zilver	M01	M02	M03	M04																			
<b>Seating</b>																																														
System X99	●	●	●	●	●	●	●	●	●	●	●	●	●	●	●	●	●	●	●	●	●	●																								
System X89	●	●	●	●	●	●	●	●	●	●	●	●	●	●	●	●	●	●	●	●	●	●	●																							
System X88	●	●	●	●	●	●	●	●	●	●	●	●	●	●	●	●	●	●	●	●	●	●	●																							
System 77	●	●	●	●	●	●	●	●	●	●	●	●	●	●	●	●	●	●	●	●	●	●	●																							
System 76	●	●	●	●	●	●	●	●	●	●	●	●	●	●	●	●	●	●	●	●	●	●	●																							
System 55	●	●	●	●	●	●	●	●	●	●	●	●	●	●	●	●	●	●	●	●	●	●	●																							
System 50	●	●	●	●	●	●	●	●	●	●	●	●	●	●	●	●	●	●	●	●	●	●	●																							
System 39		●					●													●		●	●																							
DSC/System 69	●	●	●	●	●	●	●	●	●	●	●	●	●	●	●	●	●	●	●	●	●	●	●																							
System X66	●	●	●	●	●	●	●	●	●	●	●	●	●	●	●	●	●	●	●	●	●	●	●																							
System 12	nur in Polypropylen lieferbar / only available in polypropylene seulement disponible en polypropylène / alleen beschikbaar in polypropylène																●																													
System 1	●	●	●	●	●	●	●	●	●	●	●	●	●	●	●	●	●	●	●	●	●	●	●																							
Avenue							●	●	●	●	●	●	●	●	●	●	●	●	●	●	●	●	●																							
Huit	●	●	●	●	●	●	●	●	●	●	●	●	●	●	●	●	●	●	●	●	●	●	●																							
Hello	●	●	●	●	●	●	●	●	●	●	●	●	●	●	●	●	●	●	●	●	●	●	●																							
Se04	●	●	●	●	●	●	●	●	●	●	●	●	●	●	●	●	●	●	●	●	●	●	●																							
System 03															●	●							●	●																						
Plia	nur in Polypropylen lieferbar / only available in polypropylene seulement disponible en polypropylène / alleen beschikbaar in polypropylène																●																													
Penelope	nur in Drahtgewebe schwarz lieferbar / only available in wire-loth seulement disponible en tissu métallique / allen beschikbaar in staaldraad zwart																●																													
<b>Furniture</b>																																														
P.O.S.	●	●		●	●		●																	●	●	●	●																			
K22	●	●			●		●																	●	●	●	●																			
Epure	●	●	●	●	●		●	●																●	●	●	●																			
HEXAGON	●	●		●	●		●																	●	●	●	●																			
TC 4000	●	●		●	●		●																	●	●	●	●																			
Tutti light	●	●		●	●		●	●	●				●											●	●	●	●																			
Tutti TF	●	●		●	●		●	●	●				●											●	●	●	●																			
3D	●	●		●	●		●	●	●				●											●	●	●	●																			
Anyway	●	●	●	●	●		●																	●	●	●	●																			
NewCity Box																								●	●	●	●																			
C3	●	●		●	●		●																	●	●	●	●																			
HC1																								●	●	●	●																			
Metal Pedestals																								●	●	●	●																			
NCN																								●	●	●	●																			
Hugo	●	●	●	●	●		●																	●	●	●	●																			
UNICO	●	●		●	●		●																	●	●	●	●																			
LINE 19																									●	●	●	●																		
<b>Partitioning</b>																																														
Anyway up	●	●	●	●	●		●																	●	●	●	●																			
Esedra																									●	●	●	●																		
Tutti	●	●		●	●		●	●	●				●												●	●	●	●																		
VERTICAL OFFICE	●	●		●	●		●																		●	●	●	●																		
<b>Management Furniture</b>																																														
a_con																●																														
a_con conference																																														
Bay																																														
Essence	●	●	●	●	●		●																																							
Karé																●	●																													
m_pro																●	●																													
Decade																●	●							●																						
<b>Management Seating</b>																																														
Dialog								●	●			●	●	●	●	●								●	●	●	●																			
m_sit								●	●			●	●	●	●	●								●	●	●	●																			
q_bic								●	●			●	●	●	●	●								●	●	●	●																			
s_con								●	●			●	●	●	●	●								●	●	●	●																			

● Auf Anfrage lieferbar / available upon request  
● Disponible sur demande / Verkrijgbaar op aanvraag

● Nicht für Tischoberflächen / not for desk tops  
● Pas pour les plateaux / Niet voor topbladen

● Nur Sockelfarben / only Plinth colours  
● Finitions pour plinthes / Kleuren t.b.v. plinten



# Stoff-Muster / Fabric samples / Echantillons de tissu / Monster van stof

Collection 30

Collection 86

Collection 34

Collection 84

Collection 31

Collection 87

Collection 12

Collection 88

Collection 35

Collection 89

Collection 37

Collection 99

Collection 82

Collection 97

Collection 39

Collection 95

# Feel it, touch it, see it!



System X-99



Se04



Huit

In dieser Broschüre zeigen wir viele verschiedene Stoffqualitäten. Damit Sie die Qualität und die unterschiedliche Haptik der Stoffe beurteilen können, finden Sie auf der Rückseite dieser Ausklappseite eine Collage mit Originalstoffen. So können Sie fühlen und sich gleichzeitig auf die Farbauswahl konzentrieren.

A large number of different fabrics are shown in this brochure. You will find a collage of original fabric samples on the back of this folding page, which will give you an impression of the quality and different haptic properties of the various materials. They enable you to find the material with the right "feel" so that you can concentrate on your choice of colour.

Dans cette brochure, nous vous présentons de nombreuses collections de tissus différentes. Pour que vous puissiez juger de la qualité et des différences au toucher, nous vous proposons de échantillons réels au dos de cette page. Ainsi, vous êtes en mesure d'apprécier à la fois les sensations qu'ils dégagent et la palette de coloris proposée.

In deze brochure laten wij vele verschillende stofkwaliteiten zien. Om ervoor te zorgen dat u de kwaliteit en de verschillende manieren van aanvoelen van de stoffen kunt beoordelen, vindt u op de achterpagina van deze uitklappagina een collage met originele stoffen. Zo kunt u voelen en zich tegelijkertijd concentreren op de kleurenkeuze.

**art.collection®**  
**castelli®**  
**comforto®**  
**dyes®**

**Benelux**

Haworth Benelux B.V.  
Archimedesbaan 2  
NL-3439 ME Nieuwegein  
The Netherlands  
Tel. +31 30 287 70 60  
Fax +31 30 287 70 69

**Czech Republic**

Haworth Czech  
The Park  
- Building 6  
V Parku 2316/12  
148 00 Praha 4 - Chodov  
Czech Republic

**France**

Haworth S.A.S.  
166, Rue du Fbg. St. Honoré  
F-75008 Paris  
France  
Tel. +33 1 4564 4500  
Fax +33 1 4564 4545

**Germany**

Haworth GmbH  
Communication Center  
Am Deisterbahnhof 6  
D-31848 Bad Münder  
Germany  
Tel. +49 5042 501 0  
Fax +49 5042 501 200

**Hungary**

Haworth Hungary Kft.  
Alkotás Point Building  
Alkotás út 50  
H-1123 Budapest  
Hungary  
Tel. +36 1 201 40 10  
Fax +36 1 201 19 95

**Ireland**

Haworth Ireland  
8/89 Furze Road  
Sandyford Industrial Estate  
Dublin 18  
Ireland  
Tel. +353 1 295 9355  
Fax +353 1 295 9366

**Italy**

Haworth S.p.A.  
Via Einstein, 63  
40017 San Giovanni in Persiceto  
Bologna - Italy  
Tel. +39 051 820111  
Fax +39 051 826987

**Portugal**

Haworth Portugal SA  
Estrada Consigliéri  
Pedroso, 68 Apartado 15  
P-2746-955 Queluz - Portugal  
Tel. +351 214 345 000  
Fax +351 214 345 050

**Spain**

Haworth Spain Ltd.  
C/Salvatierra 5  
- bajo - 1ª planta  
E-28034 Madrid  
Spain  
Tel. +34 91 3980 480  
Fax +34 91 3980 481

**Switzerland**

Haworth Schweiz AG  
Badstrasse 5  
Postfach 54  
CH-5737 Menziken  
Switzerland  
Tel. +41 62 765 51 51  
Fax +41 62 765 51 52

**United Kingdom**

Haworth UK Ltd.  
Cannon Court  
Brewhouse Yard  
St. John Street  
Clerkenwell  
London EC1V 4JQ - U.K.  
Tel. +44 20 73 24 13 60  
Fax +44 20 74 90 15 13

**USA**

Haworth Inc.  
One Haworth Center  
Holland MI 49423-9576  
USA  
Tel. +1 616 393 3000  
Fax +1 616 393 1570