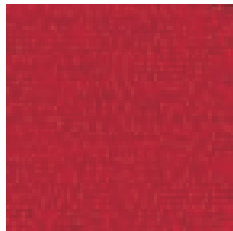
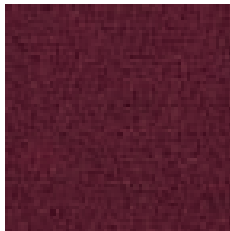


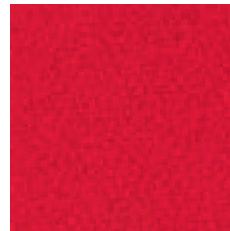
Material | Material | Matériau



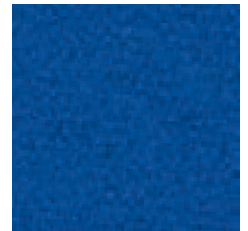
LUCCA 09  
IMPERIAL RED



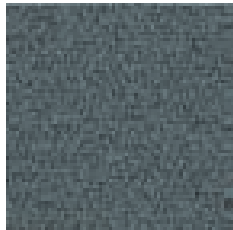
LUCCA 13  
BORDEAUX



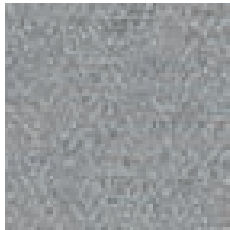
LUCCA 10  
RED



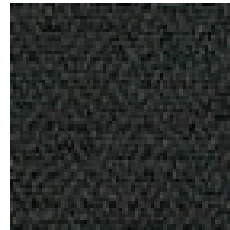
LUCCA 05  
BLUE



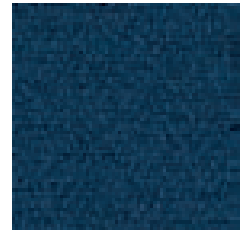
LUCCA 03  
SILVER GREY



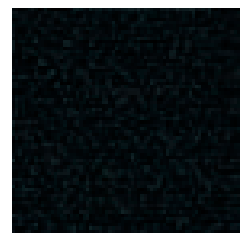
LUCCA 14  
LIGHT GREY



LUCCA 02  
DARK GREY



LUCCA 04  
DARK BLUE



LUCCA 01  
BLACK

# SATO

## LUCCA

Preisgruppe 01 | Price group 01 | Groupe de Prix 01

### Material:

100 % Polyester  
Nicht schwermetallhaltige Farbstoffe

Breite: ca. 170 cm  
Gewicht: ca. 442 g/ld.M.  
Scheuerfestigkeit: 50.000 Scheuertouren  
(Martindale)

Brandschutznormen: BS 476 Part 7 Class 1  
BS 7176: 2007  
Low Hazard  
EN 1021-1: 2006  
(Zigarettestest)  
EN 1021-2: 2006  
(Streichholztest)

### Material:

100 % Polyester  
Non metallic dyestuffs

Width: approx. 170 cm  
Weight: approx. 442 g/lin.m.  
Abrasion: 50.000 rubs  
(Martindale)

Fire protection standard: BS 476 Part 7 Class 1  
BS 7176: 2007  
Low Hazard  
EN 1021-1: 2006  
(cigarette)  
EN 1021-2: 2006  
(match)

### Matériau :

100 % Polyester  
Teintures non métalliques

Largeur : env. 170 cm  
Poids : env. 442 g/m.l.  
Résistance à l'abrasion : 50.000 tours  
(Martindale)

Épreuves d'inflammabilité : BS 476 Part 7 Class 1  
BS 7176 : 2007  
Low Hazard  
EN 1021-1 : 2006  
(cigarette)  
EN 1021-2 : 2006  
(allumette)



AOSTA 11  
ORANGE



AOSTA 10  
BORDEAUX



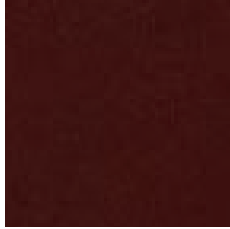
AOSTA 05  
BLUE RAF



AOSTA 04  
BLUE



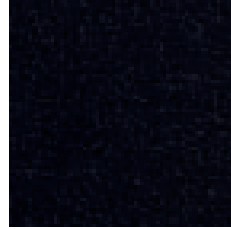
AOSTA 07  
LIGHT BROWN



AOSTA 08  
DARK BROWN



AOSTA 13  
IVORY



AOSTA 01  
BLACK

# AOSTA

Preisgruppe 01 | Price group 01 | Groupe de Prix 01

**Material:**

Kunstleder

Breite: ca. 145 cm  
Gewicht: ca. 725 g/lfd.M.  
Scheuerfestigkeit: ca. 22.000 Scheuertouren  
(Martindale)

**Material:**

Artificial leather

Width: approx. 145 cm  
Weight: approx. 725 g/lin.m.  
Abrasion: approx. 22.000 rubs  
(Martindale)

**Matériau :**

Similicuir

Largeur : env. 145 cm  
Poids : env. 725 g/m.l.  
Résistance à l'abrasion : env. 22.000 tours  
(Martindale)



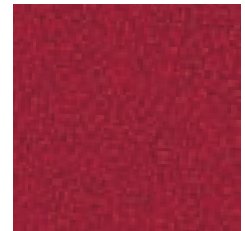
TIONE 08  
TERRACOTTA



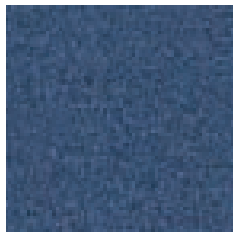
TIONE 14  
DARK ORANGE



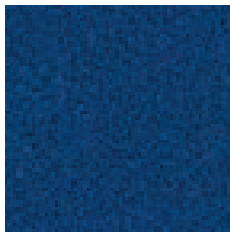
TIONE 07  
RED



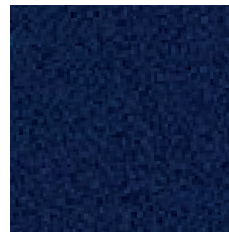
TIONE 09  
IMPERIAL RED



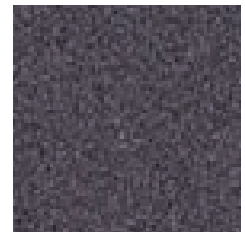
TIONE 06  
LIGHT BLUE



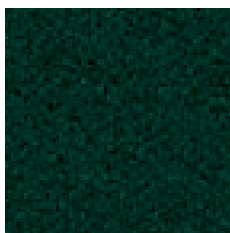
TIONE 05  
BLUE



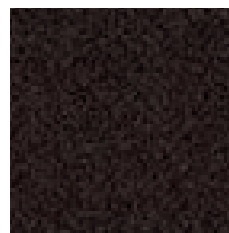
TIONE 04  
DARK BLUE



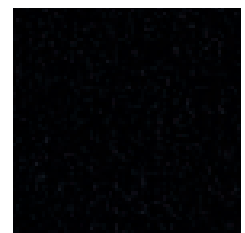
TIONE 03  
GREY



TIONE 11  
DARK GREEN



TIONE 02  
SOMBRERO



TIONE 01  
BLACK

# SATO

## TIONE

Preisgruppe 02 | Price group 02 | Groupe de Prix 02

### Material:

100 % Recycelte Polyester Xtreme FR®  
Nicht schwermetallhaltige Farbstoffe

Breite: ca. 140 cm  
Gewicht: ca. 435 g/ld.M.  
Scheuerfestigkeit: 100.000 Scheuertouren  
(Martindale)

Brandschutznormen: BS 7176: 2007  
Medium Hazard  
DIN 4102 B1  
EN 1021-1: 2006  
(Zigarettentest)  
EN 1021-2: 2006  
(Streichholztest)  
BS 5852: 2006 Section 4  
Ignition Source 5  
NF P 92-507 M1  
NF D 60-013: 2006  
UNI 8456 & UNI 9174 Class 1  
ÖNorm B1/Q1

### Material:

100 % Recycled Polyester Xtreme FR®  
Non metallic dyestuffs

Width: approx. 140 cm  
Weight: approx. 435 g/lin.m.  
Abrasion: 100.000 rubs  
(Martindale)

Fire protection standard: BS 7176: 2007  
Medium Hazard  
DIN 4102 B1  
EN 1021-1: 2006  
(cigarette)  
EN 1021-2: 2006  
(match)  
BS 5852: 2006 Section 4  
Ignition Source 5  
NF P 92-507 M1  
NF D 60-013: 2006  
UNI 8456 & UNI 9174 Class 1  
ÖNorm B1/Q1

### Matériau :

100 % Polyester Recyclé Xtreme FR®  
Teintures non métalliques

Largeur : env. 140 cm  
Poids : env. 435 g/m.l.  
Résistance à l'abrasion : 100.000 tours  
(Martindale)

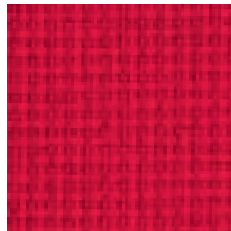
Épreuves d'inflammabilité : BS 7176 : 2007  
Medium Hazard  
DIN 4102 B1  
EN 1021-1 : 2006  
(cigarette)  
EN 1021-2 : 2006  
(allumette)  
BS 5852 : 2006 Section 4  
Ignition Source 5  
NF P 92-507 M1  
NF D 60-013: 2006  
UNI 8456 & UNI 9174 Class 1  
ÖNorm B1/Q1



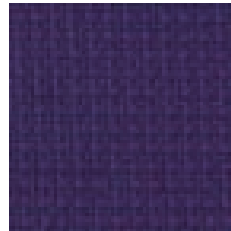
OLBIA 10  
YELLOW



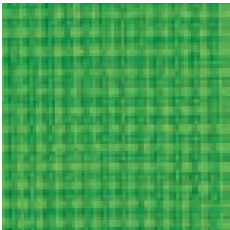
OLBIA 09  
ORANGE



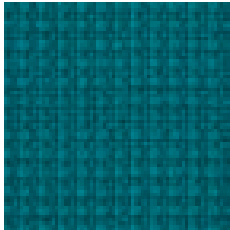
OLBIA 08  
RED



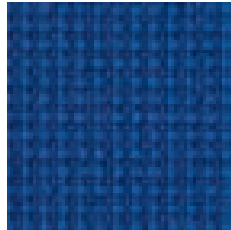
OLBIA 13  
PURPLE



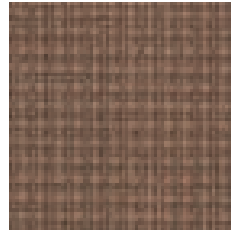
OLBIA 06  
APPLE GREEN



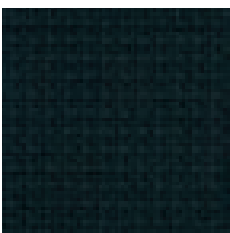
OLBIA 07  
TURQUOISE



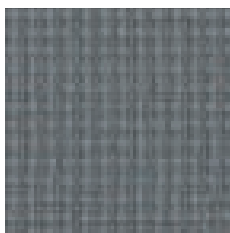
OLBIA 04  
BLUE



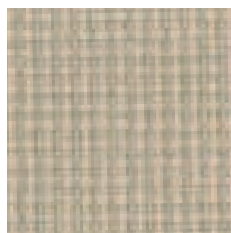
OLBIA 05  
NOUGAT



OLBIA 01  
BLACK



OLBIA 03  
GREY



OLBIA 12  
BEIGE

# OLBIA

Preisgruppe 02 | Price group 02 | Groupe de Prix 02

## Material:

100 % Recycelte Polyester FR®  
Nicht schwermetallhaltige Farbstoffe

Breite: ca. 140 cm  
Gewicht: ca. 450 g/lfd.M.  
Scheuerfestigkeit: 100.000 Scheuertouren  
(Martindale)

Brandschutznormen: EN 1021-1: 2006  
(Zigarettestest)  
EN 1021-2: 2006  
(Streichholztest)  
BS 7176: 2007 Low Hazard  
BS 5852: 2006 Sec. 4  
Ignition Source 5  
BS 7176: 2007  
Medium Hazard  
DIN 4102 B1  
NF D 60-013: 2006  
UNI 8456 & UNI 9174 Class 1  
ÖNorm B1/Q1

## Material:

100 % Recycled Polyester FR®  
Non metallic dyestuffs

Width: approx. 140 cm  
Weight: approx. 450 g/lin.m.  
Abrasion: 100.000 rubs  
(Martindale)

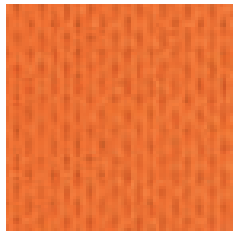
Fire protection  
standard: EN 1021-1: 2006  
(cigarette)  
EN 1021-2: 2006  
(match)  
BS 7176: 2007 Low Hazard  
BS 5852: 2006 Sec. 4  
Ignition Source 5  
BS 7176: 2007  
Medium Hazard  
DIN 4102 B1  
NF D 60-013: 2006  
UNI 8456 & UNI 9174 Class 1  
ÖNorm B1/Q1

## Matériau :

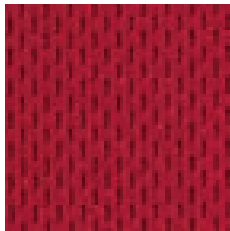
100 % Polyester Recyclé FR®  
Teintures non métalliques

Largeur : env. 140 cm  
Poids : env. 450 g/m.l.  
Résistance à l'abrasion : 100.000 tours  
(Martindale)

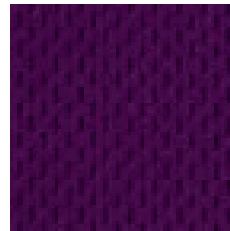
Épreuves  
d'inflammabilité : EN 1021-1 : 2006  
(cigarette)  
EN 1021-2 : 2006  
(allumette)  
BS 7176 : 2007 Low Hazard  
BS 5852 : 2006 Sec. 4  
Ignition Source 5  
BS 7176 : 2007  
Medium Hazard  
DIN 4102 B1  
NF D 60-013: 2006  
UNI 8456 & UNI 9174 Class 1  
ÖNorm B1/Q1



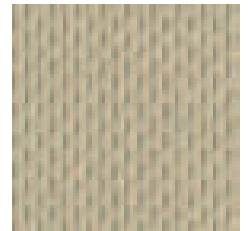
PRATO 09  
ORANGE



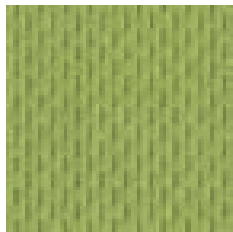
PRATO 08  
RED



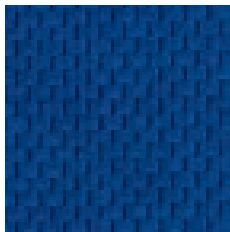
PRATO 12  
PURPLE



PRATO 11  
SAND



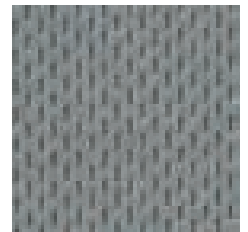
PRATO 07  
LIGHT GREEN



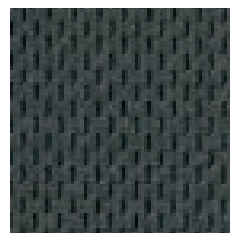
PRATO 05  
BLUE



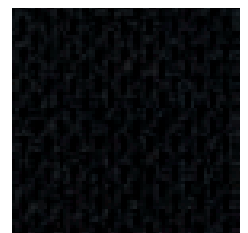
PRATO 04  
DARK BLUE



PRATO 03  
LIGHT GREY



PRATO 02  
DARK GREY



PRATO 01  
BLACK

# SATO

## PRATO

Preisgruppe 03 | Price group 03 | Groupe de Prix 03

**Material:**  
100 % Polyester

Breite: ca. 150 cm  
Gewicht: ca. 680 g/lfd.M.  
Scheuerfestigkeit: 80.000 Scheuertouren  
(Martindale)

Brandschutznormen: EN 1021-1: 2006  
(Zigarettestest)  
EN 1021-2: 2006  
(Streichholztest)  
California Tech.  
Bulletin No. 117 Sec. E  
ÖNorm B 3825 B1  
ÖNorm A 3800 P1, Q1

**Material:**  
100 % Polyester

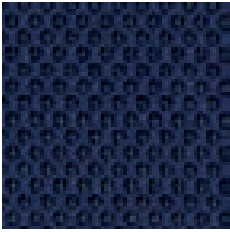
Width: approx. 150 cm  
Weight: approx. 680 g/lin.m.  
Abrasion: 80.000 rubs  
(Martindale)

Fire protection standard: EN 1021-1: 2006  
(cigarette)  
EN 1021-2: 2006  
(match)  
California Tech.  
Bulletin No. 117 Sec. E  
ÖNorm B 3825 B1  
ÖNorm A 3800 P1, Q1

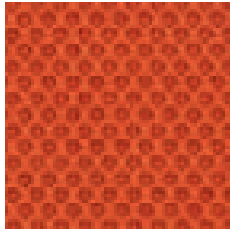
**Matériau :**  
100 % Polyester

Largeur : env. 150 cm  
Poids : env. 680 g/m.l.  
Résistance à l'abrasion : 80.000 tours  
(Martindale)

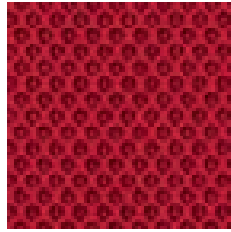
Épreuves d'inflammabilité : EN 1021-1 : 2006  
(cigarette)  
EN 1021-2 : 2006  
(allumette)  
California Tech.  
Bulletin No. 117 Sec. E  
ÖNorm B 3825 B1  
ÖNorm A 3800 P1, Q1



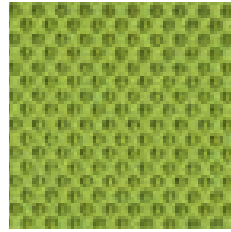
MODICA 04  
DARK BLUE



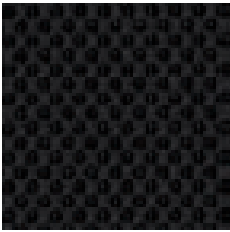
MODICA 09  
ORANGE



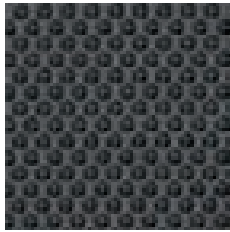
MODICA 08  
RED



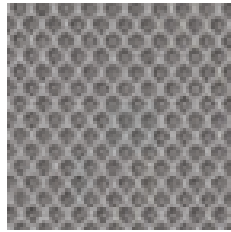
MODICA 06  
LIGHT GREEN



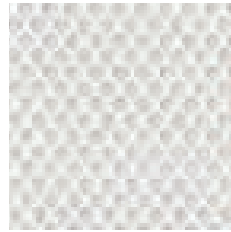
MODICA 01  
BLACK



MODICA 02  
GREY



MODICA 03  
LIGHT GREY



MODICA 11  
WHITE

# MODICA

Preisgruppe 03 | Price group 03 | Groupe de Prix 03

**Material:**

100 % Polyester

Breite: ca. 160 cm  
Gewicht: ca. 510 g/lf.d.M.  
Scheuerfestigkeit: 70.000 Scheuertouren  
(Martindale)

Brandschutznormen: EN 1021-1: 2006  
(Zigarettestest)  
EN 1021-2: 2006  
(Streichholztest)  
California Tech.  
Bulletin No. 117 Sec. E

**Material:**

100 % Polyester

Width: approx. 160 cm  
Weight: approx. 510 g/lin.m.  
Abrasion: 70.000 rubs  
(Martindale)

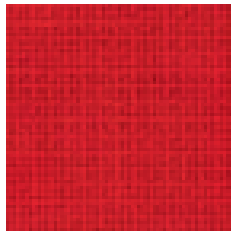
Fire protection standard: EN 1021-1: 2006  
(cigarette)  
EN 1021-2: 2006  
(match)  
California Tech.  
Bulletin No. 117 Sec. E

**Matériau :**

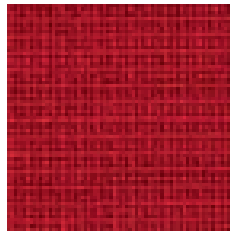
100 % Polyester

Largeur : env. 160 cm  
Poids : env. 510 g/m.l.  
Résistance à l'abrasion : 70.000 tours  
(Martindale)

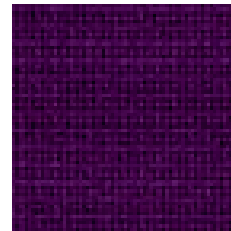
Épreuves d'inflammabilité : EN 1021-1 : 2006  
(cigarette)  
EN 1021-2 : 2006  
(allumette)  
California Tech.  
Bulletin No. 117 Sec. E



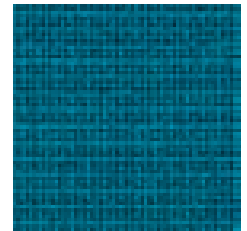
FANO 09  
RED



FANO 08  
IMPERIAL RED



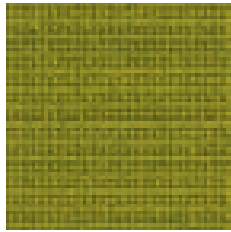
FANO 13  
PURPLE



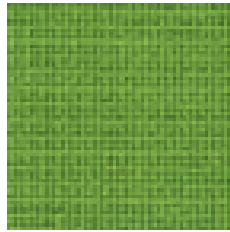
FANO 07  
TURQUOISE



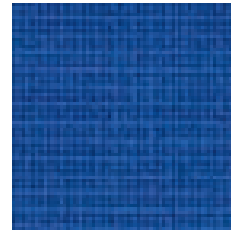
FANO 15  
BROWN



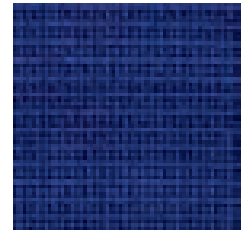
FANO 14  
LIME GREEN



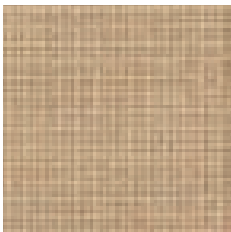
FANO 06  
LIGHT GREEN



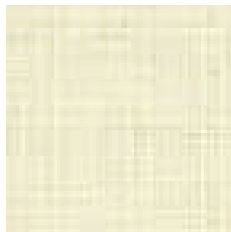
FANO 04  
ROYAL BLUE



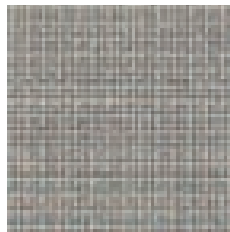
FANO 05  
BLUE



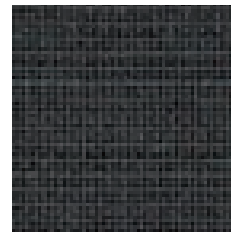
FANO 12  
BEIGE



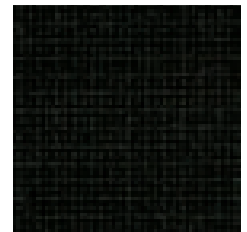
FANO 11  
WHITE



FANO 03  
LIGHT GREY



FANO 02  
ANTHRACITE



FANO 01  
BLACK

# SATO

## FANO

Preisgruppe 03 | Price group 03 | Groupe de Prix 03

### Material:

95 % Schurwolle / 5 % Polyamide

Breite: ca. 140 cm  
Gewicht: ca. 630 g/lfd.M.  
Scheuerfestigkeit: 200.000 Scheuertouren (Martindale)

Brandschutznormen: EN 1021-1: 1994 (Zigarettestest)  
EN 1021-2: 1994 (Streichholztest)  
California Tech.  
Bulletin No. 117 Sec. E  
BS 5852 Crib 5  
BS 5852 Teil 1: 1979  
DIN 4102 B2  
NF P 92-503 M2  
ÖNorm B 3825 B1  
ÖNorm A 3800 P1, Q1  
UNI 9175 Class 2

### Material:

95 % Wool / 5 % Polyamide

Width: approx. 140 cm  
Weight: approx. 630 g/lin.m.  
Abrasion: 200.000 rubs (Martindale)

Fire protection standard: EN 1021-1: 1994 (cigarette)  
EN 1021-2: 1994 (match)  
California Tech.  
Bulletin No. 117 Sec. E  
BS 5852 Crib 5  
BS 5852 Part 1: 1979  
DIN 4102 B2  
NF P 92-503 M2  
ÖNorm B 3825 B1  
ÖNorm A 3800 P1, Q1  
UNI 9175 Class 2

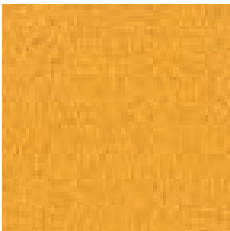
### Matériau :

95 % Laine vierge / 5 % Polyamide

Largeur : env. 140 cm  
Poids : env. 630 g/m.l.  
Résistance à l'abrasion : 200.000 tours (Martindale)

Épreuves d'inflammabilité : EN 1021-1 : 1994 (cigarette)  
EN 1021-2 : 1994 (allumette)  
California Tech.  
Bulletin No. 117 Sec. E  
BS 5852 Crib 5  
BS 5852 Part 1: 1979  
DIN 4102 B2  
NF P 92-503 M2  
ÖNorm B 3825 B1  
ÖNorm A 3800 P1, Q1  
UNI 9175 Class 2





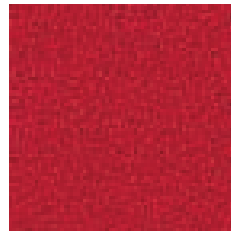
VIESTE 34  
YELLOW



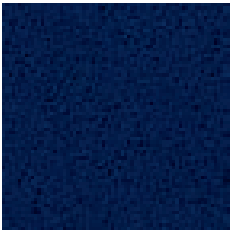
VIESTE 33  
ORANGE



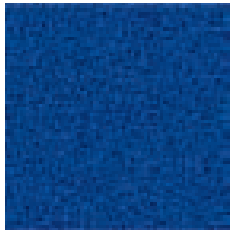
VIESTE 31  
RED



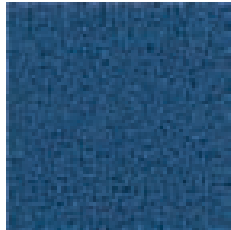
VIESTE 32  
IMPERIAL RED



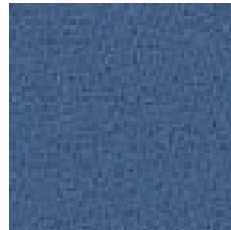
VIESTE 24  
DARK BLUE



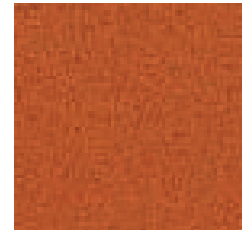
VIESTE 27  
BLUE



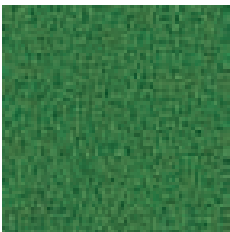
VIESTE 25  
LIGHT BLUE



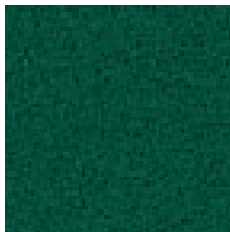
VIESTE 26  
BLUE RAF



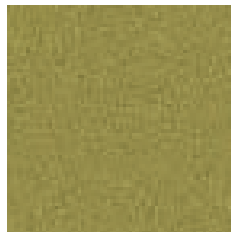
VIESTE 36  
LIGHT BROWN



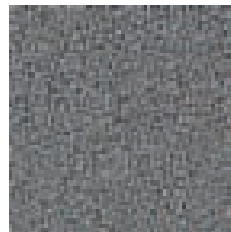
VIESTE 30  
LIGHT GREEN



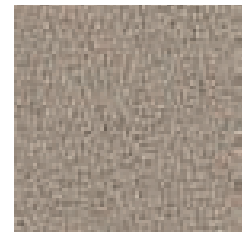
VIESTE 28  
DARK GREEN



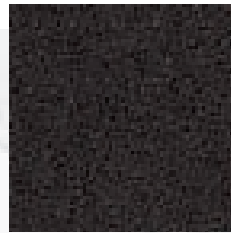
VIESTE 29  
COURGETTE GREEN



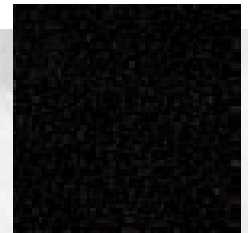
VIESTE 23  
GREY



VIESTE 35  
BEIGE



VIESTE 22  
DARK GREY



VIESTE 21  
BLACK

# VIESTE

Preisgruppe 03 | Price group 03 | Groupe de Prix 03

## Material:

100 % Reine Schurwolle  
Nicht schwermetallhaltige Farbstoffe

Breite: ca. 140 cm  
Gewicht: ca. 520 g/lf.d.M.  
Scheuerfestigkeit: ca. 50.000 Scheuertouren  
(Martindale)

Brandschutznormen: BS 7176: 2007  
Low Hazard  
EN 1021-1: 2006  
(Zigarettestest)  
EN 1021-2: 2006  
(Streichholztest)

## Material:

100 % Pure new wool  
Non metallic dyestuffs

Width: approx. 140 cm  
Weight: approx. 520 g/lin.m.  
Abrasion: approx. 50.000 rubs  
(Martindale)

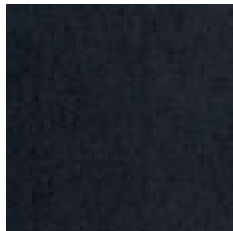
Fire protection  
standard: BS 7176: 2007  
Low Hazard  
EN 1021-1: 2006  
(cigarette)  
EN 1021-2: 2006  
(match)

## Matériau :

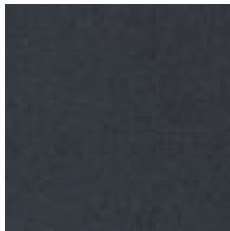
100 % Pure laine vierge  
Teintures non métalliques

Largeur : env. 140 cm  
Poids : env. 520 g/m.l.  
Résistance à l'abrasion : env. 50.000 tours  
(Martindale)

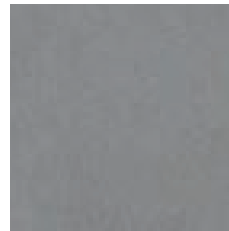
Épreuves  
d'inflammabilité : BS 7176 : 2007  
Low Hazard  
EN 1021-1 : 2006  
(cigarette)  
EN 1021-2 : 2006  
(allumette)



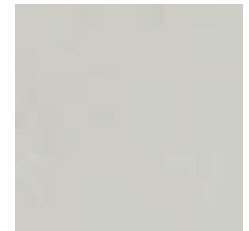
PESARO 01  
ANTHRACITE



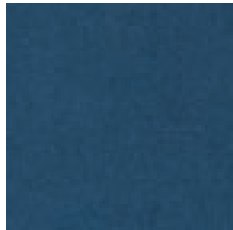
PESARO 02  
DARK GREY



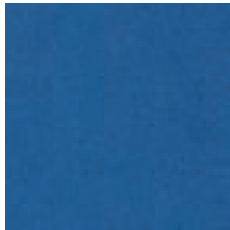
PESARO 03  
GREY



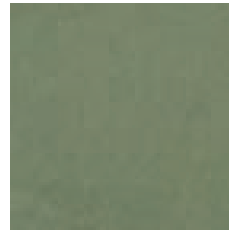
PESARO 04  
LIGHT GREY



PESARO 05  
DARK BLUE



PESARO 06  
BLUE



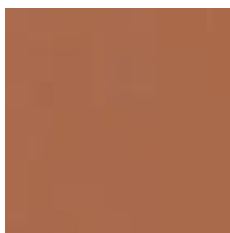
PESARO 08  
GREEN



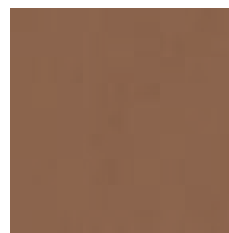
PESARO 09  
RED



PESARO 10  
BEIGE



PESARO 11  
LIGHT BROWN



PESARO 12  
BROWN

# SATO

## PESARO

Preisgruppe 03 | Price group 03 | Groupe de Prix 03

### Material:

100 % Polyester – Microfaser  
Fleckschutzausrüstung mit Teflon

Breite: ca. 150 cm  
Gewicht: ca. 520 g/ld.M.  
Scheuerfestigkeit: 45.000 Scheuertouren  
(Martindale)

Brandschutznormen: BS 5852: 1979 Teil 1  
EN 1021-1: 1994  
(Zigarettestest)  
EN 1021-2: 1994  
(Streichholztest)

### Material:

100 % Polyester – Microfibre  
Stain release finish with teflon

Width: approx. 150 cm  
Weight: approx. 520 g/lin.m.  
Abrasion: 45.000 rubs  
(Martindale)

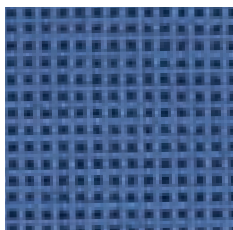
Fire protection standard: BS 5852: 1979 Part 1  
EN 1021-1: 1994  
(cigarette)  
EN 1021-2: 1994  
(match)

### Matériau :

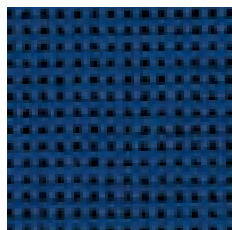
100 % Polyester – Microfibre  
Protection anti taches avec téflon

Largeur : env. 150 cm  
Poids : env. 520 g/m.l.  
Résistance à l'abrasion : 45.000 tours  
(Martindale)

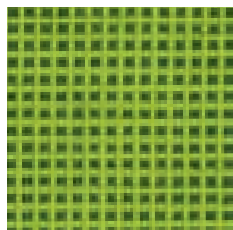
Épreuves d'inflammabilité : BS 5852 : 1979 Part 1  
EN 1021-1 : 1994  
(cigarette)  
EN 1021-2 : 1994  
(allumette)



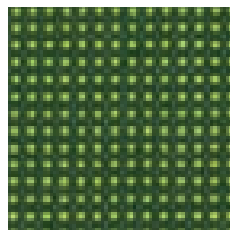
VENEZIA 05  
BLUE



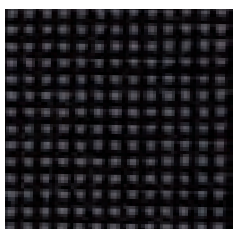
VENEZIA 04  
DARK BLUE



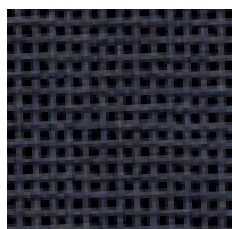
VENEZIA 06  
LIGHT GREEN



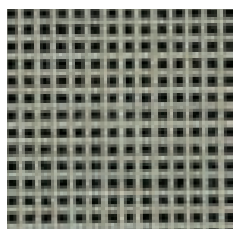
VENEZIA 07  
NEW GREEN



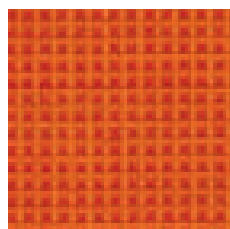
VENEZIA 01  
BLACK



VENEZIA 02  
DARK GREY



VENEZIA 11  
BEIGE



VENEZIA 10  
ORANGE

# VENEZIA

Preisgruppe 04 | Price group 04 | Groupe de Prix 04

## Material:

100 % Trevira CS

Breite: ca. 150 cm  
Gewicht: ca. 510 g/lfd.M.  
Scheuerfestigkeit: 80.000 Scheuertouren  
(Martindale)

Brandschutznormen: DIN 4102 B1  
EN 1021-1: 2006  
(Zigarettestest)  
EN 1021-2: 2006  
(Streichholztest)  
BS 5852: Ignition Source 5  
ÖNorm B1 / Q1  
California Tech.  
Bulletin No. 117 Sec. E.  
AS/NZS 1530.3  
FAR 25.853  
IMO A.652 (16)  
UNI 9177 Class 1  
NF P 92-507 M1  
NF D 60-013

## Material:

100 % Trevira CS

Width: approx. 150 cm  
Weight: approx. 510 g/lin.m.  
Abrasion: 80.000 rubs  
(Martindale)

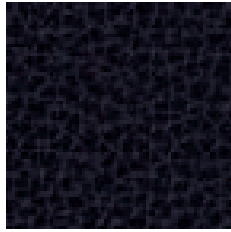
Fire protection standard: DIN 4102 B1  
EN 1021-1: 2006  
(cigarette)  
EN 1021-2: 2006  
(match)  
BS 5852: Ignition Source 5  
ÖNorm B1 / Q1  
California Tech.  
Bulletin No. 117 Sec. E.  
AS/NZS 1530.3  
FAR 25.853  
IMO A.652 (16)  
UNI 9177 Class 1  
NF P 92-507 M1  
NF D 60-013

## Matériau :

100 % Trevira CS

Largeur : env. 150 cm  
Poids : env. 510 g/m.l.  
Résistance à l'abrasion : 80.000 tours  
(Martindale)

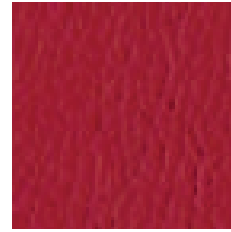
Épreuves d'inflammabilité : DIN 4102 B1  
EN 1021-1 : 2006  
(cigarette)  
EN 1021-2 : 2006  
(allumette)  
BS 5852 : Ignition Source 5  
ÖNorm B1 / Q1  
California Tech.  
Bulletin No. 117 Sec. E.  
AS/NZS 1530.3  
FAR 25.853  
IMO A.652 (16)  
UNI 9177 Class 1  
NF P 92-507 M1  
NF D 60-013



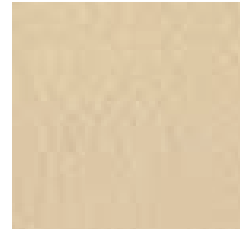
VERONA 01  
NERO



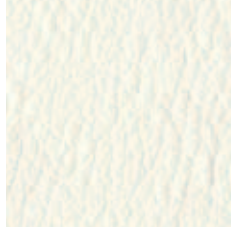
VERONA 06  
DARK BROWN



VERONA 08  
RED



VERONA 13  
IVORY



VERONA 12  
WHITE



# SATO

## VERONA

Preisgruppe 04 | Price group 04 | Groupe de Prix 04

### Leder

Verona wird aus sorgfältig in Chromsalzen gegerbten Häuten hergestellt und nach modernsten und umweltfreundlichen Erkenntnissen verarbeitet.

### Eigenschaften:

Weiche Leder sind absolut lichtecht und abwaschbar. Zudem sind diese verschleißfest, formbeständig, flexibel und atmungsfähig.

### Material:

Chromgegerbt, mit Anilinfarben durchgefärbt und mit pflegeleichtem Finish versehen.

### Technische Angaben:

Material:	Echt Leder
Stärke:	1,0 - 1,2 mm
Durchschnittsmaß:	>= 5,0 m <sup>2</sup> je Haut und Produktionspartie
Oberfläche:	Durchgefärbtes Leder
Brennverhalten:	EN 1021-1

Lichtechtheit getestet nach Methode  
EN ISO 105-B02: min. Wert 5.

Reibechtheit bei 1000 Touren, trocken: min. Wert 5;  
bei 200 Touren, nass: min. Wert 5

### Leather

Verona is sorted out carefully in chrome salt tanned skins and processed after most modern and pollution free realizations.

### Characteristics:

Soft leather looks very naturally and is absolutely light genuine and washable. They are wear resistant and resistant to deformation, flexible and breathable as well.

### Material:

Chrome tanned coloured, with aniline dyes and easy to clean. From Central European raw commodity, in whole skins.

### Technical specifications:

Material:	Genuine leather
Strength:	1,0 - 1,2 mm
Diameter:	>= 5,0 m <sup>2</sup> per skin and production batch
Surface:	Imbued leather
Fire protection standard:	EN 1021-1

Light fastness tested according to method  
EN ISO 105-B02: min. value 5.

Rubbing authenticity with 1000 routes drying: min.  
value 5; with 200 routes wet: min. value 5

### Cuir

Seuls des cuirs de grande qualité sont repris dans notre assortiment. Ceux-ci proviennent de peaux soigneusement tannées dans des sels de chrome et traitées selon les méthodes les plus modernes et écologiques.

### Qualité :

Les cuirs souples ont un aspect naturel et sont inaltérable à la lumière et lavables. En outre, ils sont résistants à l'usure et à la déformation, flexibles et aérés.

### Matériau :

Tanné au chrome, teinté en profondeur à l'aniline et traité pour un entretien facile.

### Spécifications techniques :

Matériau :	Cuir véritable
Epaisseur :	1,0 - 1,2 mm
Diamètre :	>= 5,0 m <sup>2</sup> par peau et série de production
Surface :	Cuir teinté en profondeur
Epreuves d'inflammabilité :	EN 1021-1

La résistance à la lumière est testée selon la méthode  
EN ISO 105-B02 : un score minimal de 5.

La résistance au frottement après 1000 tours,  
à sec : score minimal 5 ; après 200 tours, mouillé :  
score minimal 5





DESIGNO 07  
CEDAR



DESIGNO 13  
IVORY



DESIGNO 10  
RASPBERRY



DESIGNO 02  
ANTRA



DESIGNO 01  
NERO



DESIGNO 04  
MARINA



# DESIGNO

Preisgruppe 05 | Price group 05 | Groupe de Prix 05

## Leder

Bei der Herstellung unseres Leders unterliegen alle Verarbeitungsstufen der erstrangigen Berücksichtigung der Umweltverträglichkeit. Unser Leder verschafft Ihnen auch eine Reihe angenehmer Eigenschaften:

- Traumhafte Weichheit und Geschmeidigkeit.
- Ungehinderter Feuchtigkeitsaustausch.
- Für Menschen wie Sie, die mit Recht natürliches Leder fordern und unser Ergebnis wertschätzen können, haben wir unser Leder entwickelt. Sie wissen daher auch, dass Farbschattierungen von Haut zu Haut sowie Narben, Abschürfungen, raue Stellen durch Dung, Insektenstiche, Schmarotzerbisse untrügliche Zeichen eines unverfälschten Naturerzeugnisses sind.

## Technische Angaben:

Material:	Qualitativ hochwertiges Leder
Stärke:	0,9 - 1,3 mm
Durchschnittsmaß:	>= 5,0 m <sup>2</sup> je Haut und Produktionspartie
Oberfläche:	Naturnarbig, ohne künstliche Prägung
Brennverhalten:	IMO-Res. A 652 (16) ÖNORM B3825 schwer entflammbar ÖNORM B3800 DIN 5510-2 BS 5852 Crib 7 BS 5852 Crib 5 EN 1021-1 EN 1021-2

## Leather

The selected production techniques for our leather are based on meeting ecological standards. In addition, our leather provides you with the following general advantages:

- Our leather is robust but smooth and soft.
- The pores of the hide are open and so any perspiration will be absorbed.
- We developed our leather for people like you, who ask for a natural leather with good reasons and appreciate our solution. With such natural products you understand that:
  - slight variations of colour may appear between hides, or even within a single hide.
  - scars, abrasions, insect stings and parasite bites are a sign of genuine leather and a natural product.

## Technical specifications:

Material:	High quality leather
Strength:	0,9 - 1,3 mm
Diameter:	>= 5,0 m <sup>2</sup> per skin and production batch
Surface:	Naturally grained, without artificial embossment
Fire protection standard:	IMO-Res. A 652 (16) ÖNORM B3825 of low flammability ÖNORM B3800 DIN 5510-2 BS 5852 Crib 7 BS 5852 Crib 5 EN 1021-1 EN 1021-2

## Cuir

Toutes les étapes de la production de notre cuir sont soumises aux règles essentielles du respect de l'environnement. Notre cuir vous apporte aussi les avantages suivants:

- Notre cuir est robuste et néanmoins lisse et souple.
- Les pores de la peau sont ouverts, permettant l'absorption de la transpiration.
- Nous avons développé notre cuir, pour des gens comme vous, qui ont de bonnes raisons pour réclamer un cuir naturel, et qui apprécieront notre solution. Cependant, vous n'êtes pas sans savoir que:
  - de légères variations de teintes peuvent apparaître entre deux peaux d'une même couleur, parfois sur une même peau.
  - les marques, les éraflures, les piqûres d'insectes et les cicatrices du cuir sont les signes d'un cuir véritable dans son aspect le plus naturel.

## Spécifications techniques :

Matériau :	Cuir de haute qualité
Épaisseur :	0,9 - 1,3 mm
Diamètre :	>= 5,0 m <sup>2</sup> par peau et série de production
Surface :	Grenu naturellement, sans frappe artificielle
Épreuves :	IMO-Res. A 652 (16)
d'inflammabilité :	ÖNORM B3825 inflammable difficilement ÖNORM B3800 DIN 5510-2 BS 5852 Crib 7 BS 5852 Crib 5 EN 1021-1 EN 1021-2



LOOP 10  
PINK



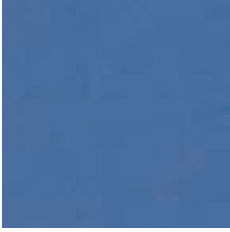
LOOP 09  
RED



LOOP 07  
APPLE GREEN



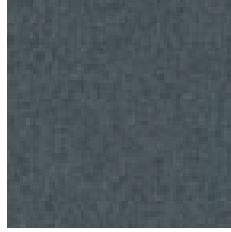
LOOP 08  
ORANGE



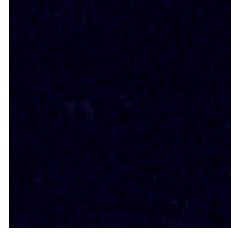
LOOP 05  
ICE BLUE



LOOP 04  
DARK BLUE



LOOP 03  
GREY



LOOP 02  
BLUISH BLACK

# LOOP

Preisgruppe 05 | Price group 05 | Groupe de Prix 05

**Material:**

80 % Polyester  
20 % Polyurethan  
Microfaser

Breite: ca. 140 cm  
Gewicht: ca. 500 g/lf.d.M.  
Scheuerfestigkeit: ca. 45.000 Scheuertouren  
(Martindale)

Brandschutznormen: EN 1021-1: 1994  
(Zigarettestest)  
EN 1021-2: 1994  
(Streichholztest)  
California Tech.  
Bulletin No. 117 Sec. E.  
BS 5852 Ignition Source 5  
IMO A.652 (16)

**Material:**

80 % Polyester  
20 % Polyurethane  
Microfibre

Width: approx. 140 cm  
Weight: approx. 500 g/lin.m.  
Abrasion: approx. 45.000 rubs  
(Martindale)

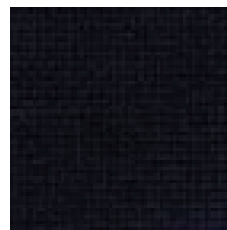
Fire protection  
standard: EN 1021-1: 1994  
(cigarette)  
EN 1021-2: 1994  
(match)  
California Tech.  
Bulletin No. 117 Sec. E.  
BS 5852 Ignition Source 5  
IMO A.652 (16)

**Matériau :**

80 % Polyester  
20 % Polyurethan  
Microfibre

Largeur : env. 140 cm  
Poids : env. 500 g/m.l.  
Résistance à l'abrasion : env. 45.000 tours  
(Martindale)

Épreuves  
d'inflammabilité : EN 1021-1 : 1994  
(cigarette)  
EN 1021-2 : 1994  
(allumette)  
California Tech.  
Bulletin No. 117 Sec. E.  
BS 5852 Ignition Source 5  
IMO A.652 (16)



01 BLACK – Bezug/fabric



01 BLACK – Netz/mesh

## CP CHAIR BY *okamura*

### Material Netz:

100 % Polyester

Breite: ca. 130 cm  
Gewicht: ca. 705 g/lfd.M. Sitz  
ca. 595 g/lfd.M. Rücken  
Scheuerfestigkeit: ca. 50.000 Scheuertouren  
(Martindale)

### Material Bezug:

100 % Polyester

Breite: 135 cm  
Gewicht: 590 g/lfd.M  
Scheuerfestigkeit: ca. 50.000  
Scheuertouren  
(Martindale)

### Material mesh:

100 % Polyester

Width: approx. 130 cm  
Weight: approx. 705 g/lin.m seat  
approx. 595 g/lin.m backrest  
Abrasion: approx. 50.000 rubs  
(Martindale)

### Material fabric:

100 % Polyester

Width: 135 cm  
Weight: 590 g/lin.m  
Abrasion: approx. 50.000 rubs  
(Martindale)

### Matériau filet :

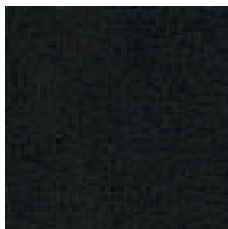
100 % Polyester

Largeur : env. 130 cm  
Poids : env. 705 g/m.l. siège  
env. 595 g/m.l. dossier  
Résistance à l'abrasion : env. 50.000 tours  
(Martindale)

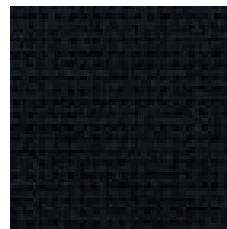
### Matériau tissu :

100 % Polyester

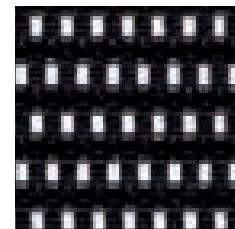
Largeur : 135 cm  
Poids : 590 g/m.l.  
Résistance à l'abrasion : env. 50.000 tours  
(Martindale)



LEATHER 01 BLACK



01 BLACK – Bezug/fabric



01 BLACK – Netz/mesh

## CONTESSA BY *okamura*

### Material Netz:

100 % Polyester

Breite: ca. 130 cm  
Gewicht: ca. 600 g/lfd.M.  
Scheuerfestigkeit: ca. 50.000 Scheuertouren  
(Martindale)

### Material Bezug:

100 % Polyester

Breite: 135 cm  
Gewicht: 590 g/lfd.M  
Scheuerfestigkeit: ca. 50.000 Scheuertouren  
(Martindale)

### Optionales Material: Sitz

100 % echtes Leder

### Material mesh:

100 % Polyester

Width: approx. 130 cm  
Weight: approx. 600 g/lin.m  
Abrasion: approx. 50.000 rubs  
(Martindale)

### Material fabric:

100 % Polyester

Width: 135 cm  
Weight: 590 g/lin.m  
Abrasion: approx. 50.000 rubs  
(Martindale)

### Optional Material: Seat

100 % real leather

### Matériau filet :

100 % Polyester

Largeur : env. 130 cm  
Poids : env. 600 g/m.l.  
Résistance à l'abrasion : env. 50.000 tours  
(Martindale)

### Matériau tissu :

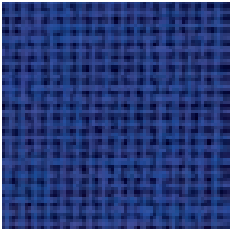
100 % Polyester

Largeur : 135 cm  
Poids : 590 g/m.l.  
Résistance à l'abrasion : env. 50.000 tours  
(Martindale)

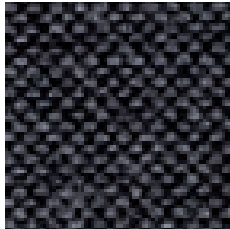
### Optional Matériau : Siège

100 % véritablement cuir





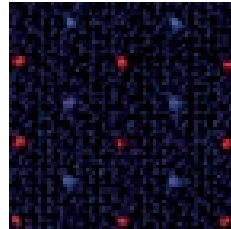
AREZZO 02 ROYAL BLUE



AREZZO 06 ANTHRACITE



AREZZO 19 BLACK



BARI 15 MIDNIGHT BLUE

# SONDERSTOFFE CPC

## AREZZO

**Material:**

100 % Dralon

Breite: ca. 140 cm

Gewicht: ca. 550 g/lfd.M.

Scheuerfestigkeit: über 30.000 Scheuertouren (Martindale)

**Material:**

100 % Dralon

Width: approx. 140 cm

Weight: approx. 550 g/lin.m.

Abrasion: more than 30.000 rubs (Martindale)

**Matériau :**

100 % Dralon

Largeur : env. 140 cm

Poids : env. 550 g/m.l.

Resistance à l'abrasion : plus de 30.000 tours (Martindale)

## BARI

**Material:**

97 % Polyester

3 % Elastan; Trevira CS

Breite: ca. 140 cm

Gewicht: ca. 610 g/lfd.M.

Scheuerfestigkeit: über 50.000 Scheuertouren (Martindale)

Brandschutznormen: DIN 4102 B1  
DIN 54336  
EMPA V3  
NFPA 701

**Material:**

97 % Polyester

3 % Elastan; Trevira CS

Width: approx. 140 cm

Weight: approx. 610 g/lin.m.

Abrasion: more than 50.000 rubs (Martindale)

Fire protection standard: DIN 4102 B1  
DIN 54336  
EMPA V3  
NFPA 701

**Matériau :**

97 % Polyester

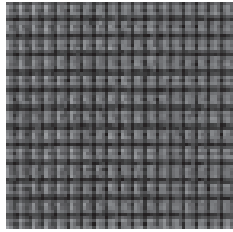
3 % Elasthan ; Trevira CS

Largeur : env. 140 cm

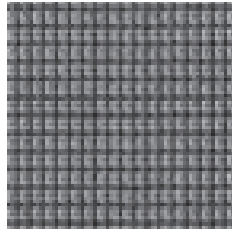
Poids : env. 610 g/m.l.

Resistance à l'abrasion : plus de 50.000 tours (Martindale)

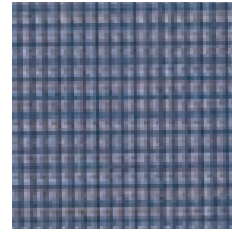
Épreuves d'inflammabilité : DIN 4102 B1  
DIN 54336  
EMPA V3  
NFPA 701



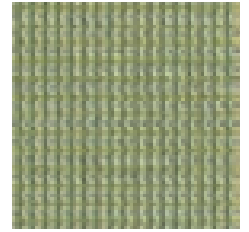
01 BLACK



02 DARK GREY



04 DARK BLUE



06 GREEN

## SAIL MESH

**Material:**

99 % Polyester  
1 % Elasthan

Breite: ca. 120 cm  
Gewicht: ca. 215 g/lfd.M.  
Scheuerfestigkeit: 30.000 Scheuertouren  
(Martindale)

Brandschutznormen: EN 1021-1 (Zigarettestest)

**Material:**

99 % Polyester  
1 % Elasthan

Width: approx. 120 cm  
Weight: approx. 215 g/lin.m.  
Abrasion: 30.000 rubs  
(Martindale)

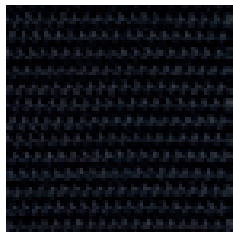
Fire protection standard: EN 1021-1 (cigarette)

**Matériau :**

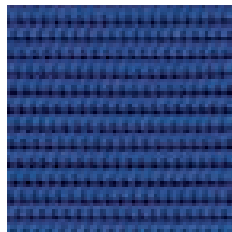
99 % Polyester  
1 % Elasthan

Largeur : env. 120 cm  
Poids : env. 215 g/m.l.  
Resistance à l'abrasion : 30.000 tours  
(Martindale)

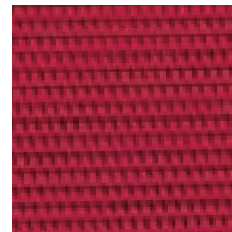
Épreuves d'inflammabilité : EN 1021-1 : 1994  
(cigarette)



01 BLACK



04 BLUE



09 RED



13 IVORY

## SATOLINE MESH

**Material:**

100 % Polyester

Gewicht: ca. 585 g/lfd.M.  
Scheuerfestigkeit: 30.000 Scheuertouren  
(Martindale)

Brandschutznormen: DIN 4102 B1  
EN 1021-1: 1994  
(Zigarettestest)  
EN 1021-2: 1994  
(Streichholztest)

**Material:**

100 % Polyester

Weight: approx. 585 g/lin.m.  
Abrasion: 30.000 rubs  
(Martindale)

Fire protection standard: DIN 4102 B1  
EN 1021-1: 1994  
(cigarette)  
EN 1021-2: 1994  
(match)

**Matériau :**

100 % Polyester

Poids : env. 585 g/m.l.  
Resistance à l'abrasion : 30.000 tours  
(Martindale)

Épreuves d'inflammabilité : DIN 4102 B1  
EN 1021-1 : 1994  
(cigarette)  
EN 1021-2 : 1994  
(allumette)

# STOFFINDEX

## Ein SATO OFFICE Bürostuhl ist immer individuell

In unserem Stoffmuster-Katalog können Sie zwischen einer ungewöhnlich großen Vielfalt an Bezügen wählen. Bitte beachten Sie, dass verarbeitungstechnische Gründe nur nachfolgende Kombinationen erlauben.

## A SATO OFFICE chair is always individual

In our fabric catalogue you will be able to select from an unusually large variety of coverings. Please note that for technical processing reasons, only the following combinations are possible.

## Un siège de bureau SATO OFFICE est toujours «exclusif»

Dans notre nuancier général, vous avez la possibilité de choisir parmi une palette de revêtements, particulièrement large. Veuillez cependant noter que, pour des raisons de faisabilité technique, seules les combinaisons indiquées sont possibles.

	SAIL	Solution	Tiger	Leo II	Galileo	Extra / E. mesh	Satoline / S. mesh
Lucca	✓	✓	✓	✓	✓	✓	✓
Aosta	○	✓	✓	✗	✗	✓	✓
Tione	✓	✓	✓	✓	✓	✓	✓
Olbia	✓	✓	✓	○	✓	✓	✓
Prato	✓	✓	✓	✓	✓	✓	✓
Modica	✓	✓	✓	○	✗	✓	✓
Fano	✓	✓	✓	✓	✓	✓	✓
Vieste	○	✓	✓	✓	✓	✓	✓
Pesaro	✓	✓	✓	✓	✓	✓	✓
Verona	✓	✓	✓	✓	✗	✓	✓
Venezia	✓	✓	✓	✗	✓	✓	✓
Designo	✓	✓	✓	✓	✓	✓	✓
Loop	○	✓	✓	✓	✓	✓	✓

	EPC	Passu	Match	Puma	Cougar	Enviro
Lucca	✓	✓	✓	✓	✓	✓
Aosta	✓	✓	✓	✓	✓	○
Tione	✓	✓	✓	✓	✓	✓
Olbia	✓	✓	✓	✓	✓	✓
Prato	✓	✓	✓	✓	✓	✓
Modica	✓	✓	✓	✓	✓	✓
Fano	✓	✓	✓	✓	✓	✓
Vieste	✓	✓	✓	✓	✓	✓
Pesaro	✓	✓	✓	✓	✓	✓
Verona	✓	○	✓	✓	✓	✓
Venezia	✓	○	✓	✓	✓	✓
Designo	✓	○	✓	✓	✓	✓
Loop	✓	○	✓	✓	✓	✓

- ✓ empfohlene Kombination
- nicht empfehlenswerte Kombination
- ✗ nicht möglich

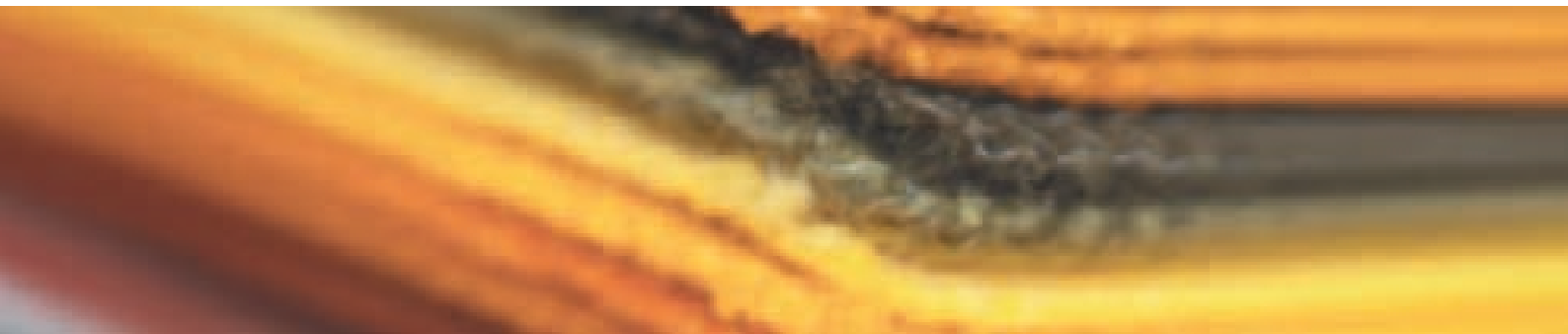
Bei Leder (Verona/Designo) müssen Sitz und Rücken in derselben Farbe sein.

- ✓ recommended combination
- not recommended combination
- ✗ not possible

With leather (Verona/Designo), seat and back must be in the same colour.

- ✓ combinaison recommandée
- combinaison non recommandée
- ✗ pas possible

Cuir (Verona/Designo): l'assise et le dossier doivent être de la même couleur.

**HINWEIS:**

Geringe Farbabweichungen, insbesondere bei Nachlieferungen, sind produktionsbedingt und nie ganz auszuschließen. Lieferung von Sonderfarben bei Abnahme gewisser Mindestmengen und einer Lieferfrist von 8 bis 10 Wochen möglich.

**NOTE:**

Slight colour deviations, especially with subsequent deliveries are production-related and therefore cannot be avoided altogether. Deliveries of special colours are possible depending on certain quantities and a delivery time of 8 to 10 weeks.

**NOTE:**

De petites divergences en couleur, surtout en cas de livraisons ultérieures, ne peuvent pas être évitées entièrement pour des raisons de fabrication. Livraison de couleurs particulières possible en cas de certaines quantités minimum avec un délai de livraison de 8 à 10 semaines.