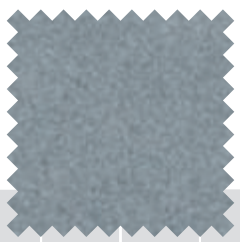




stoff- & oberflächenvariationen **2007**

variations of fabrics & surfaces
variations de tissus & de la surface
stof & uitvoeringen variaties

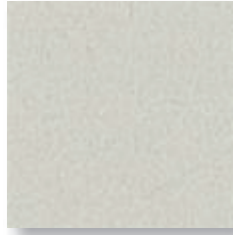


mikrofaser stoffgruppe 80 **2007**

microfibre
microfibre
microvezel



80/8027



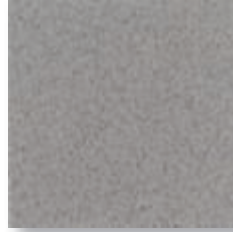
80/8028



80/8004



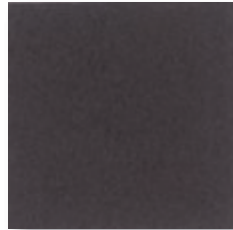
80/8030



80/8029



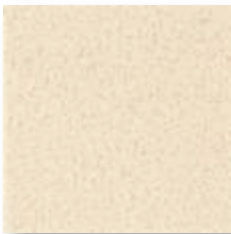
80/8021



80/8022



80/8000



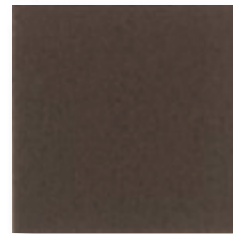
80/8002



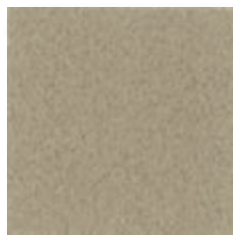
80/8031



80/8032



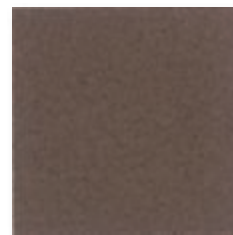
80/8033



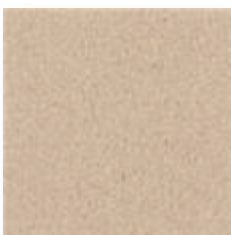
80/8034



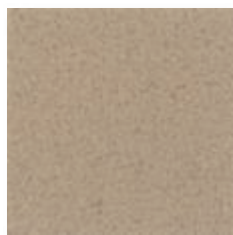
80/8020



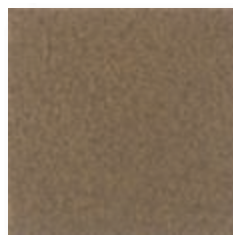
80/8035



80/8036



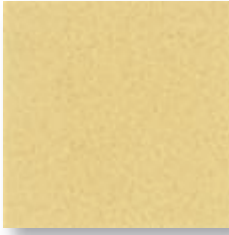
80/8037



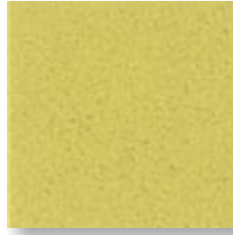
80/8038



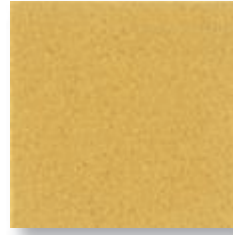
80/8003



80/8039



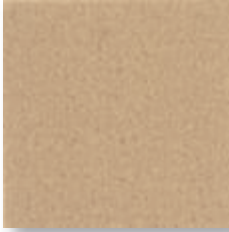
80/8040



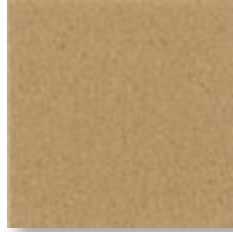
80/8001



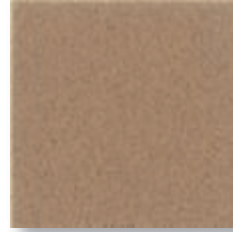
80/8023



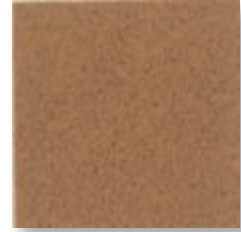
80/8006



80/8041



80/8042



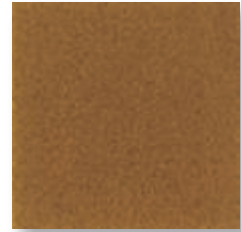
80/8026



80/8043



80/8024



80/8045



80/8010



80/8046



80/8047



80/8048



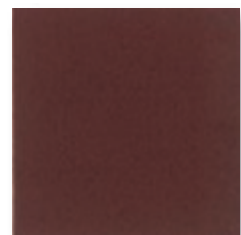
80/8049



80/8011



80/8050



80/8051



80/8052



80/8053



80/8054



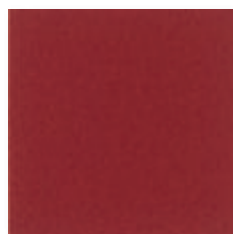
80/8055



80/8056



80/8012



80/8057



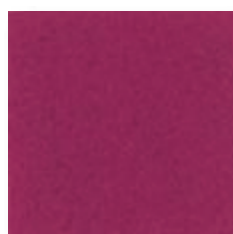
80/8058



80/8044



80/8059



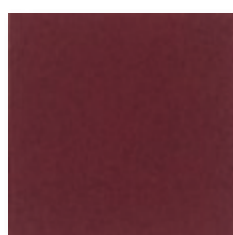
80/8060



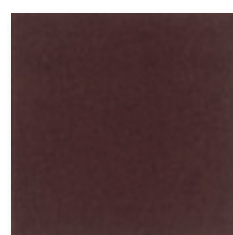
80/8009



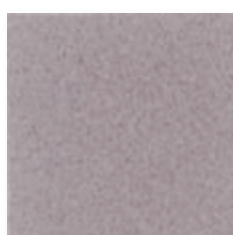
80/8061



80/8062



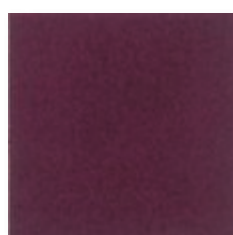
80/8063



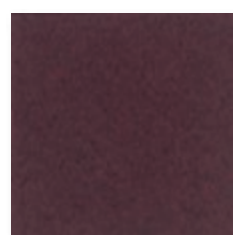
80/8064



80/8065



80/8016



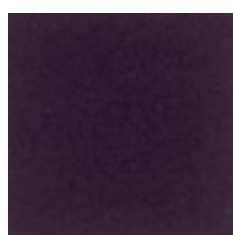
80/8066



80/8067



80/8068



80/8069



80/8070



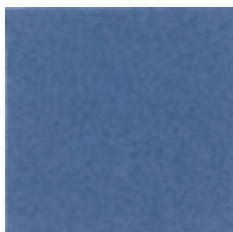
80/8071



80/8072



80/8008



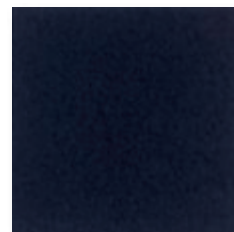
80/8013



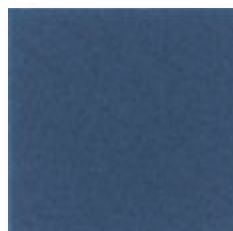
80/8073



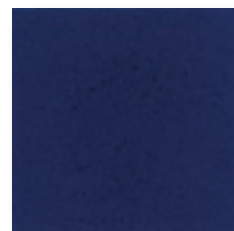
80/8007



80/8074



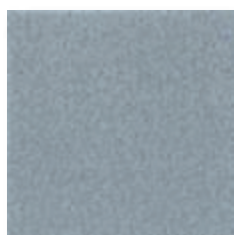
80/8075



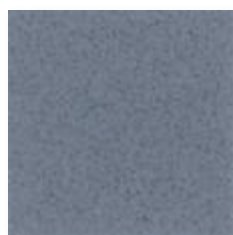
80/8076



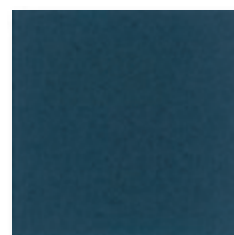
80/8077



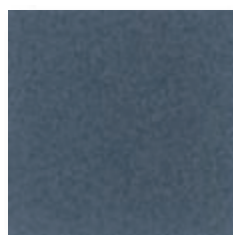
80/8078



80/8079



80/8080



80/8081



80/8017



80/8015



80/8082



80/8014



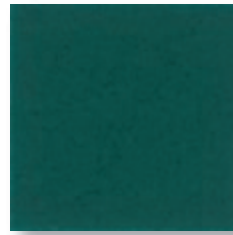
80/8083



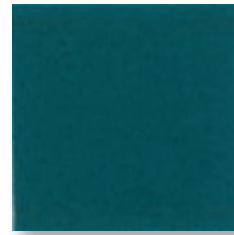
80/8084



80/8085



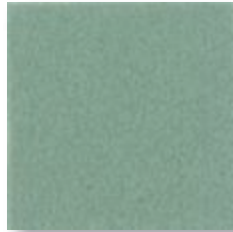
80/8005



80/8086



80/8087



80/8088



80/8025



80/8089



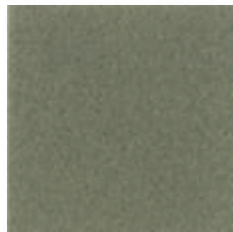
80/8090



80/8091



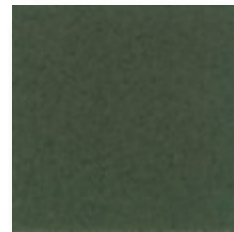
80/8092



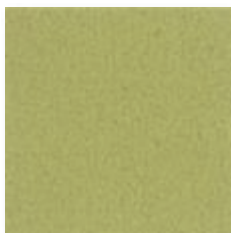
80/8019



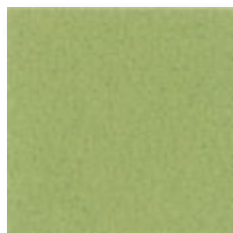
80/8093



80/8094



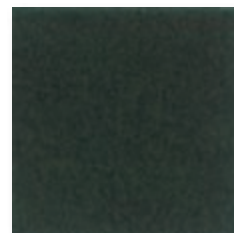
80/8018



80/8095



80/8096



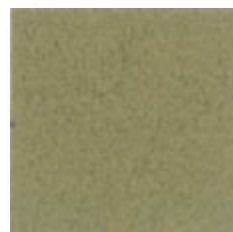
80/8097



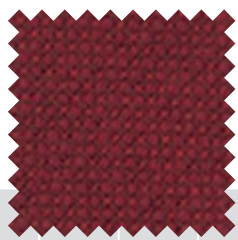
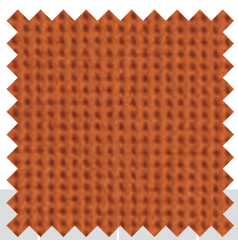
80/8098



80/8099

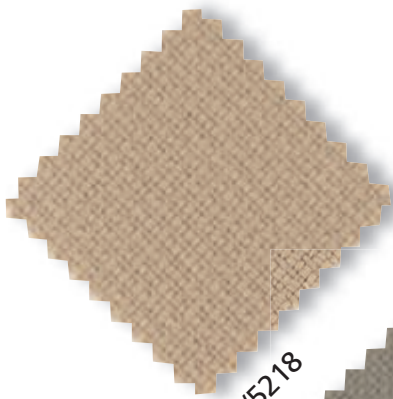


80/8100

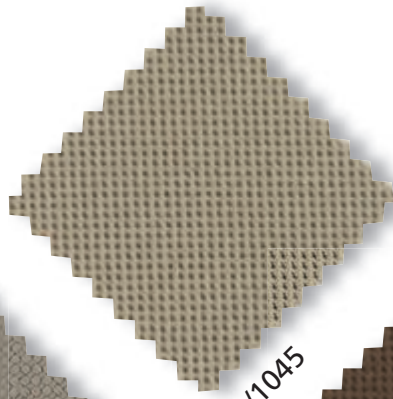


variationen **2007**

variations
variations
variaties



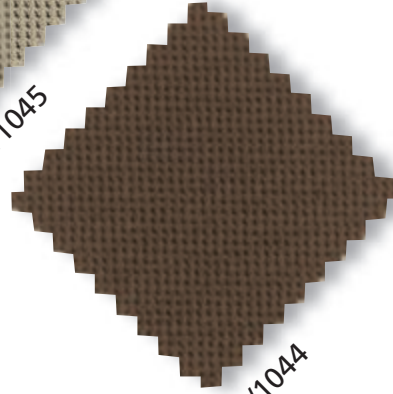
50/5218



10/1045



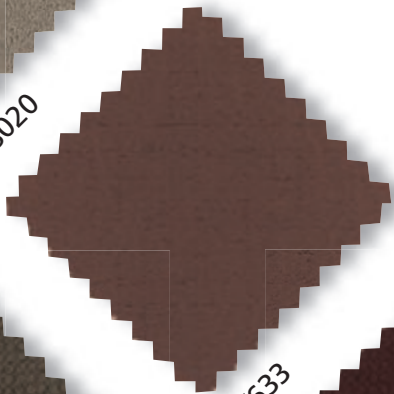
50/5201



10/1044



80/8020



60/633



50/5217



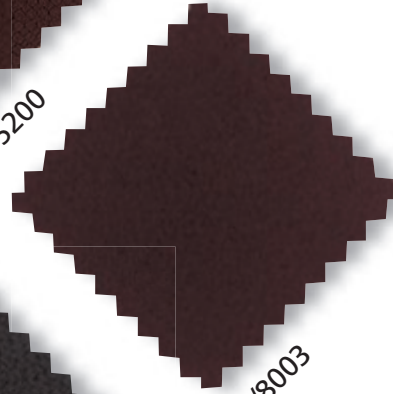
50/5202



50/5200



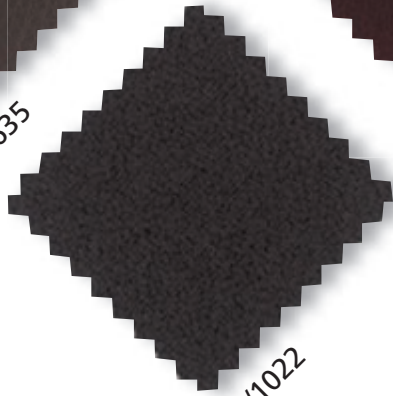
60/635



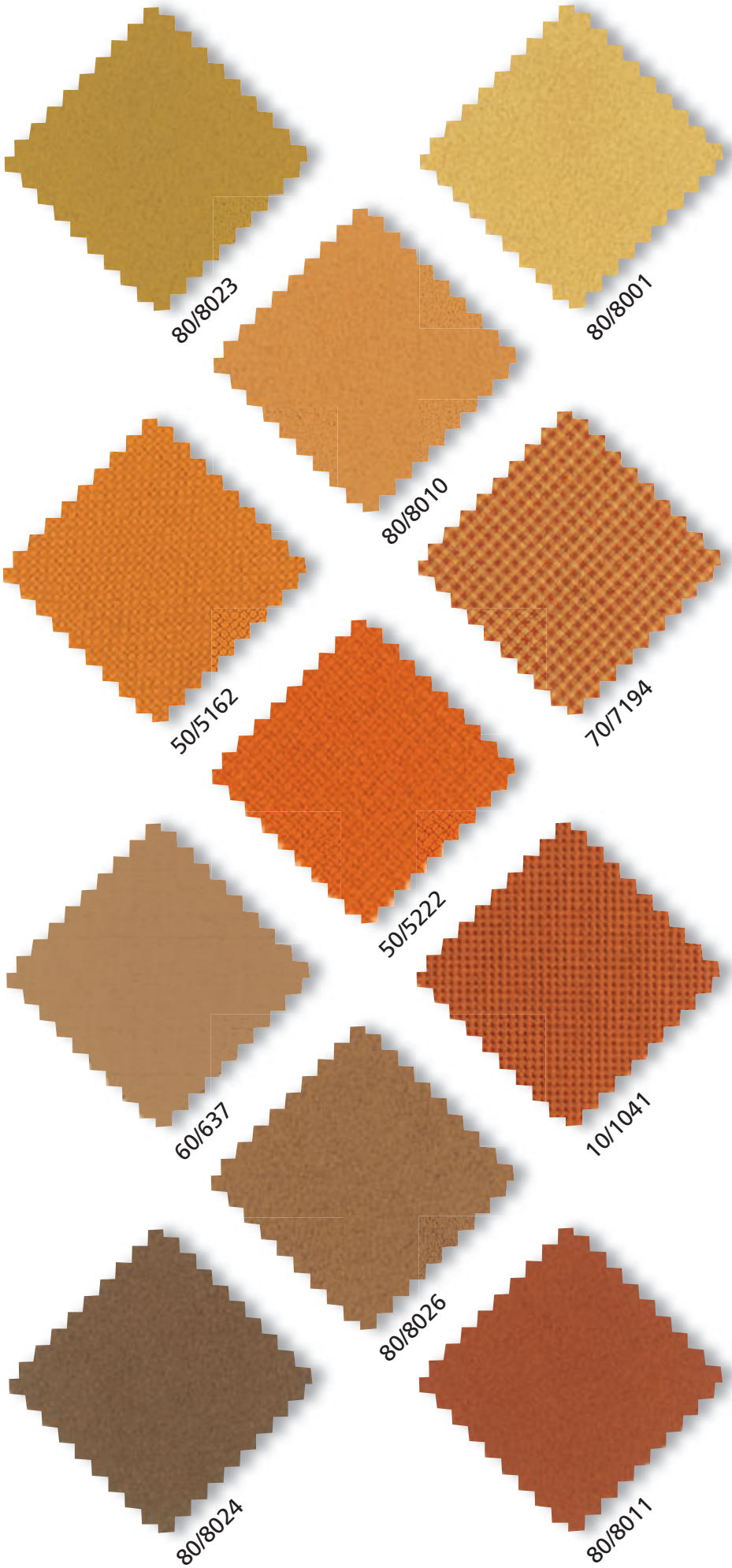
80/8003

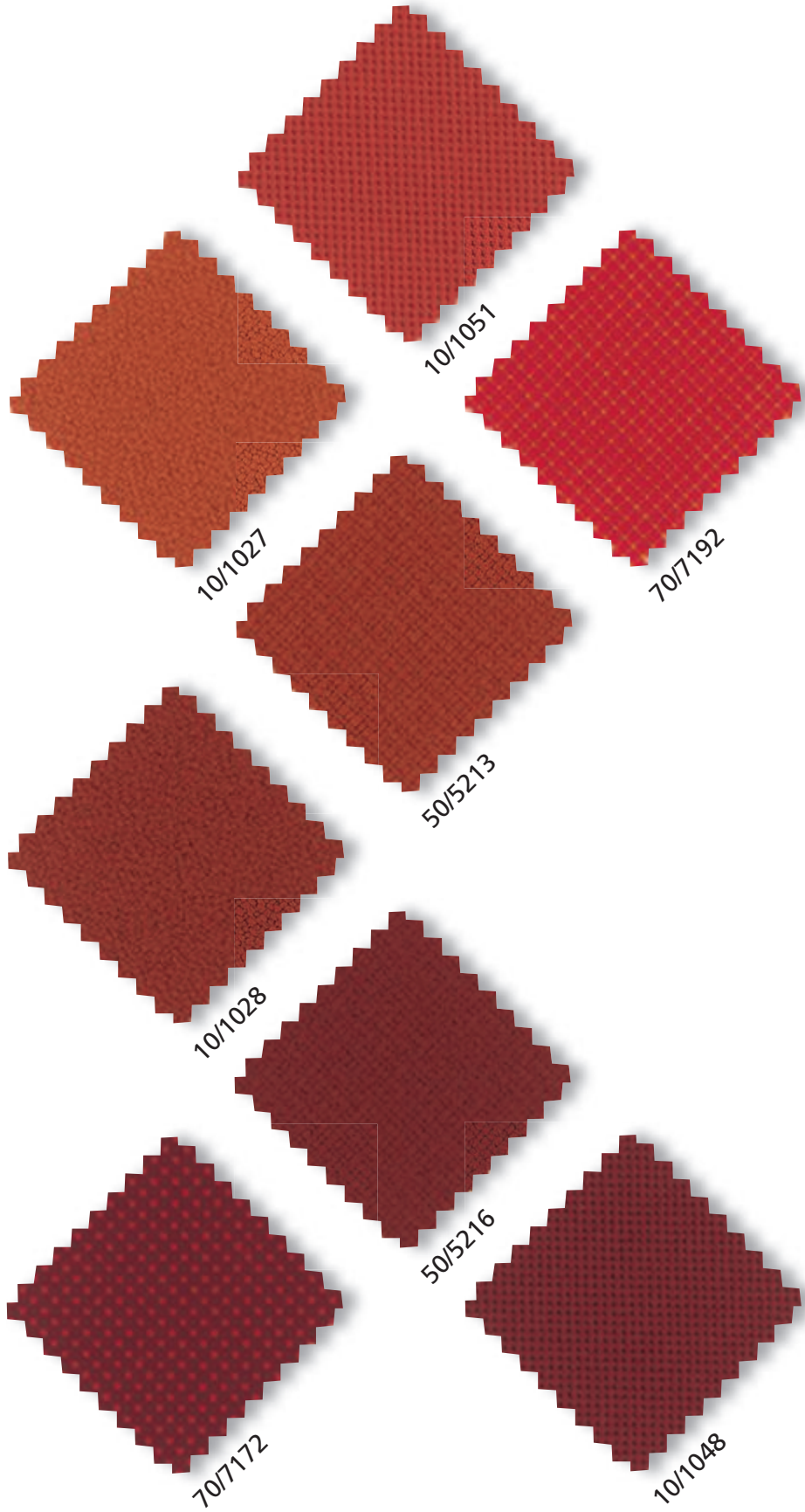


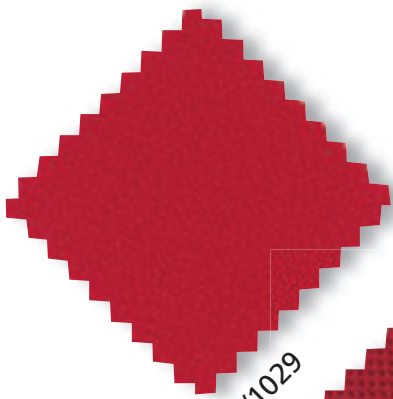
10/220



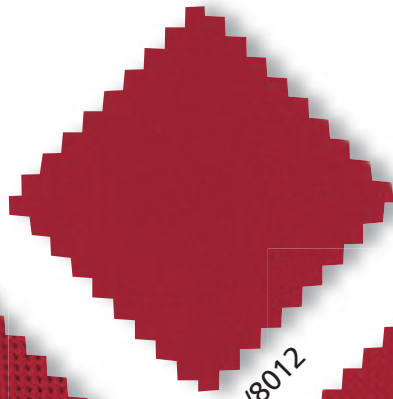
10/1022



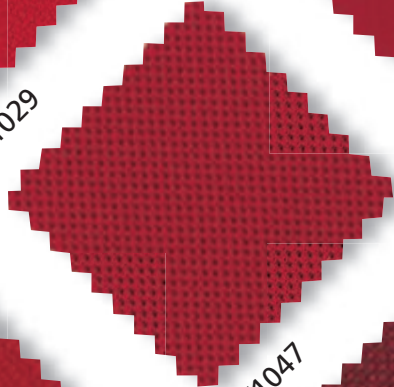




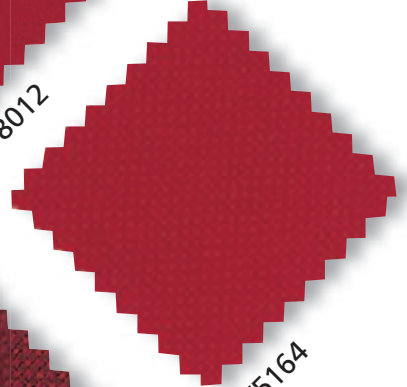
10/1029



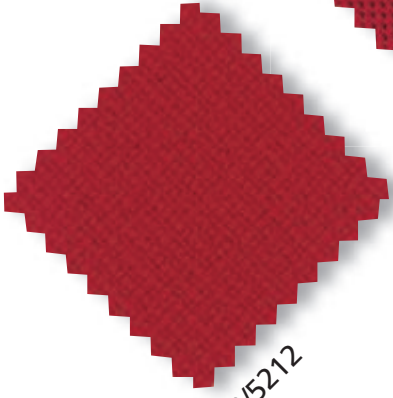
80/8012



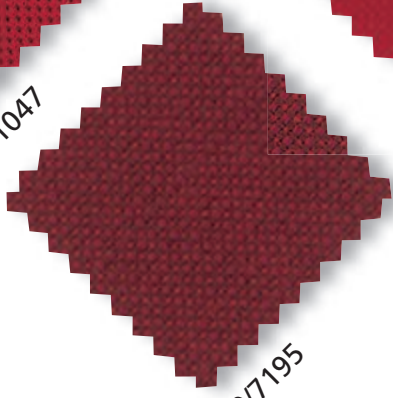
10/1047



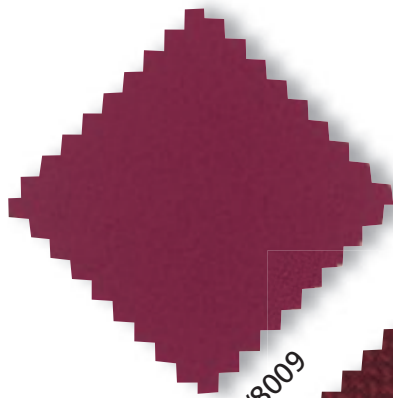
50/5164



50/5212



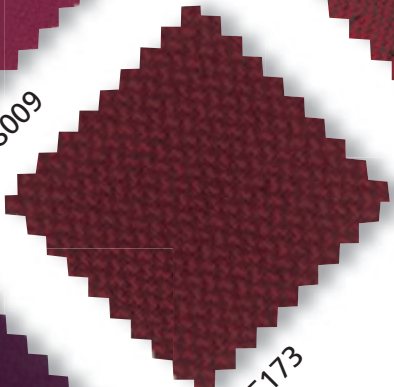
70/7195



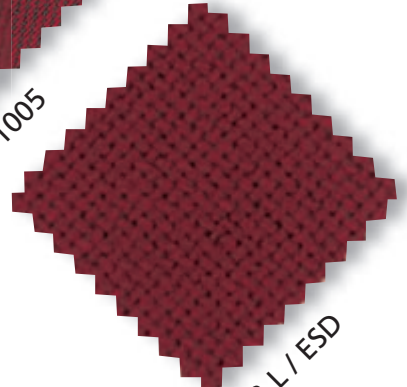
80/8009



10/1005



50/5173



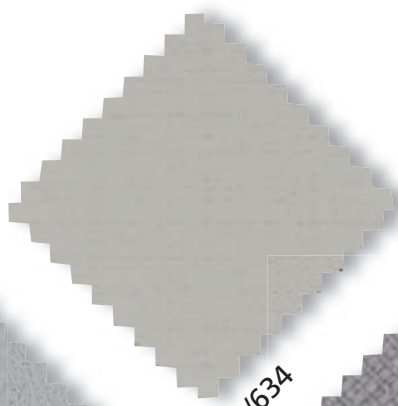
133 L / ESD



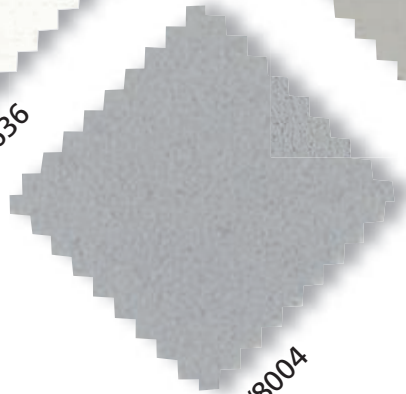
80/8016



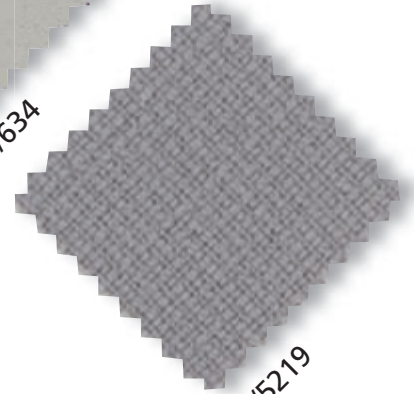
60/636



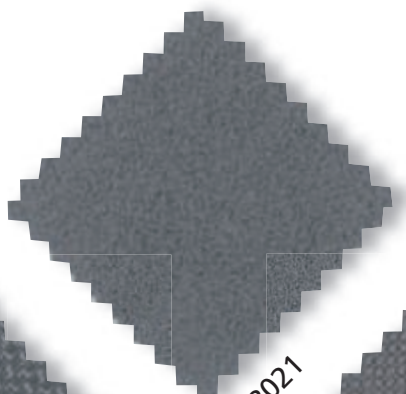
60/634



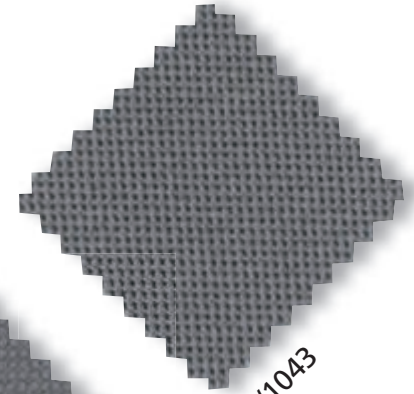
80/8004



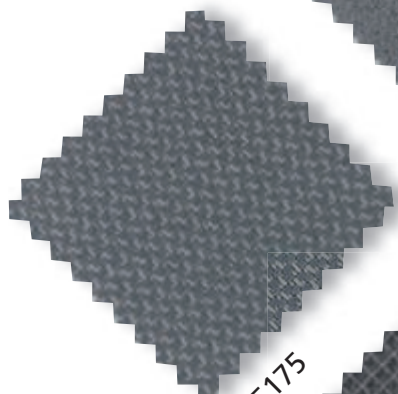
50/5219



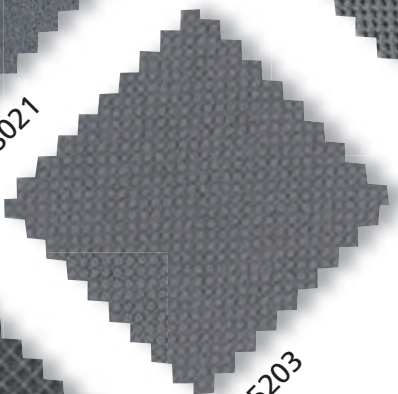
80/8021



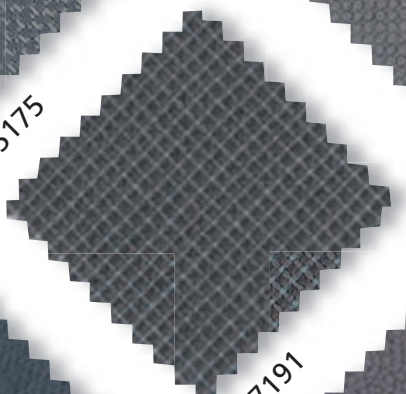
10/1043



50/5175



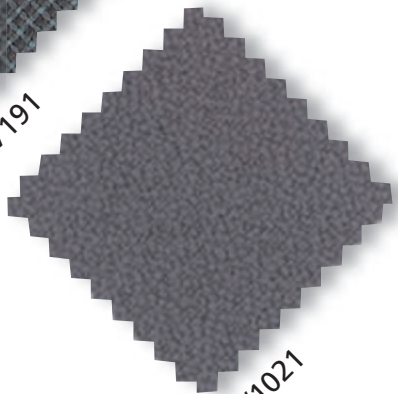
50/5203



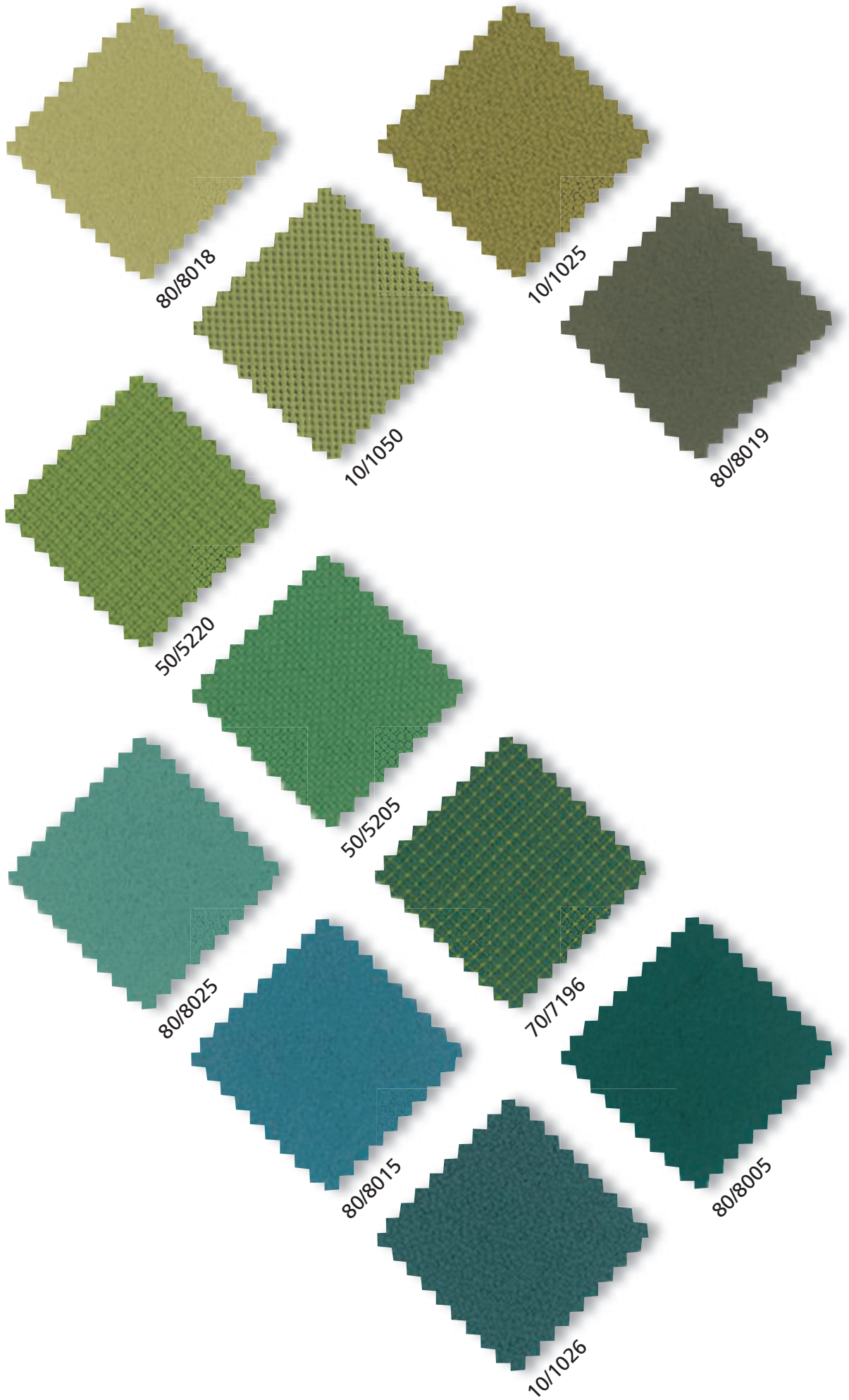
70/7191



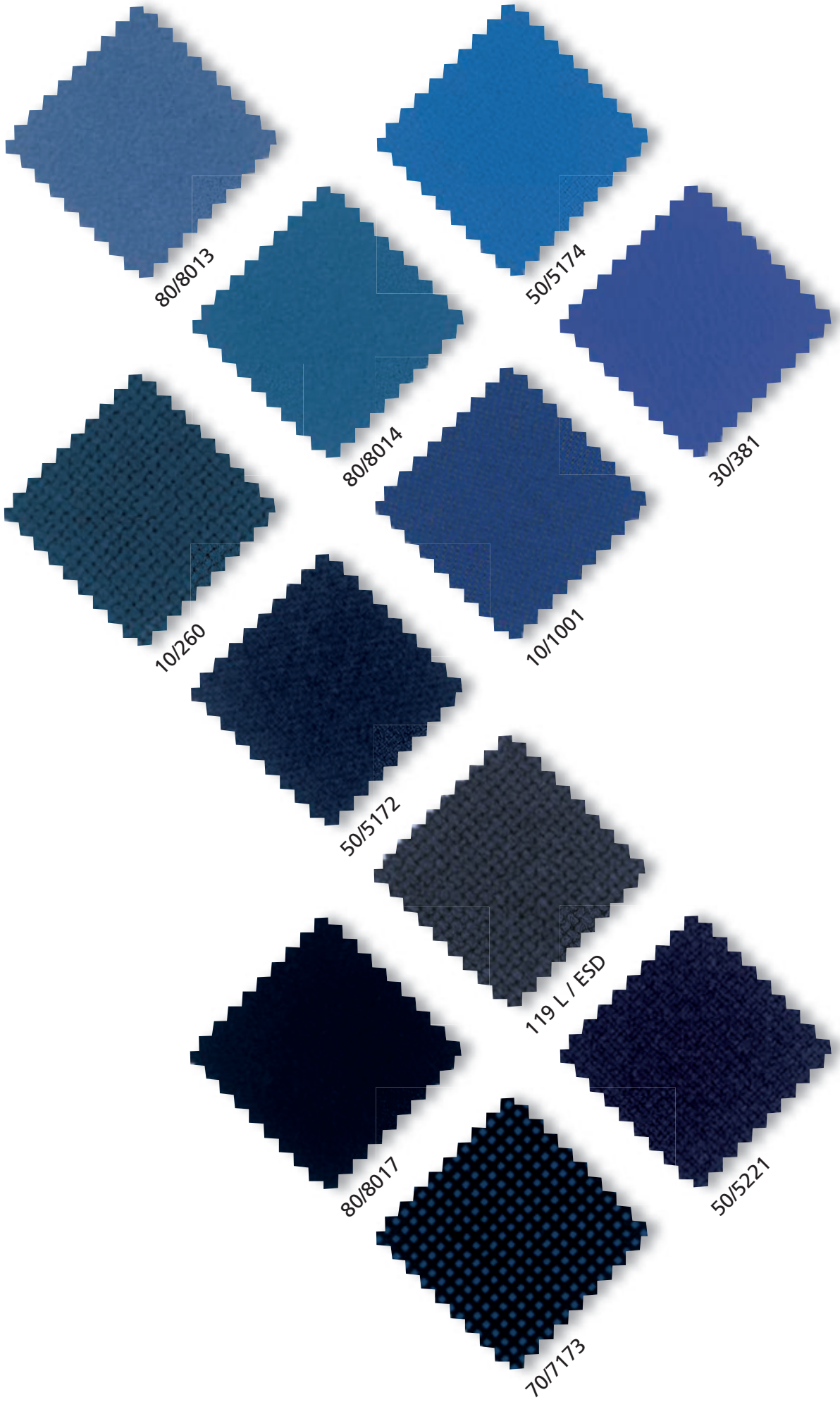
10/1007



10/1021

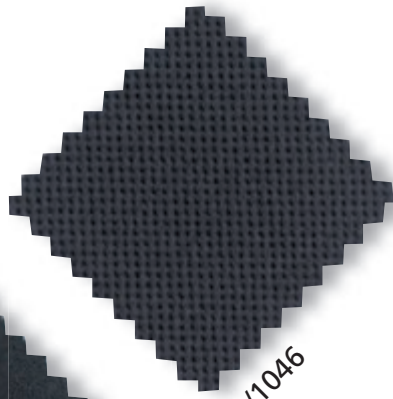








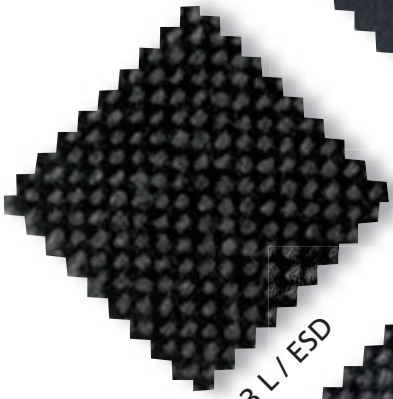
50/5215



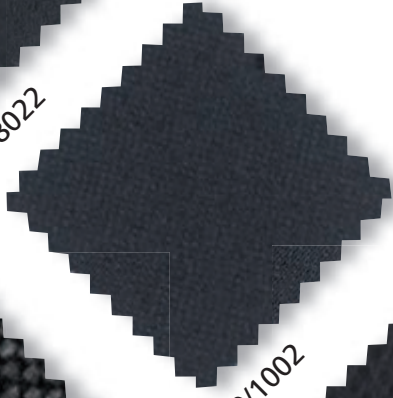
10/1046



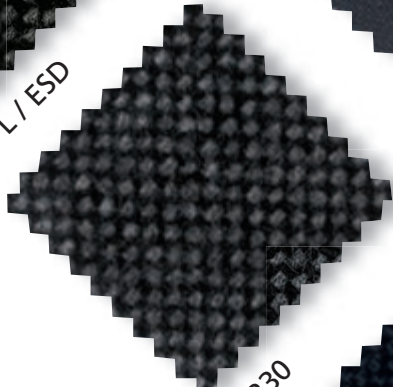
80/8022



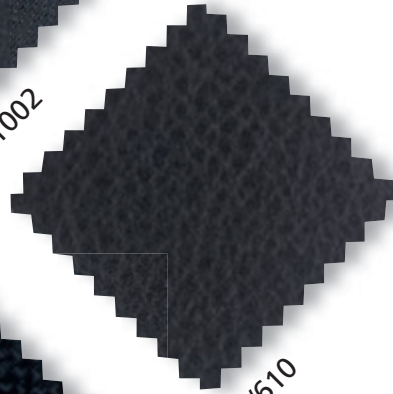
123 L / ESD



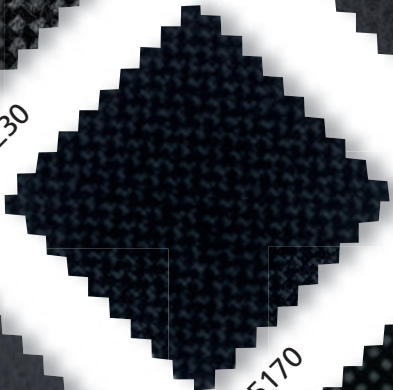
10/1002



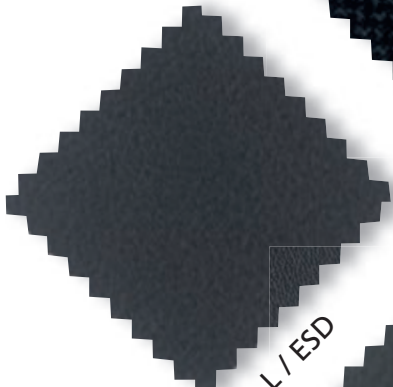
10/230



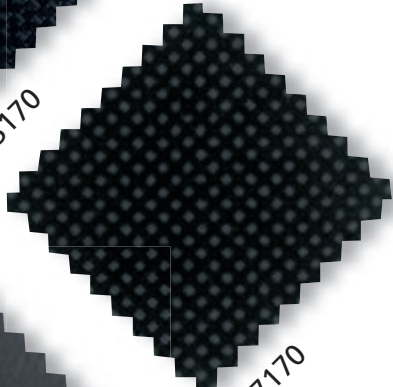
60/610



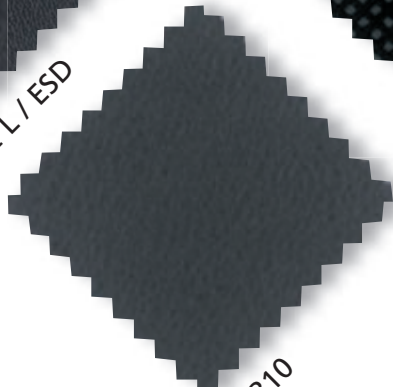
50/5170



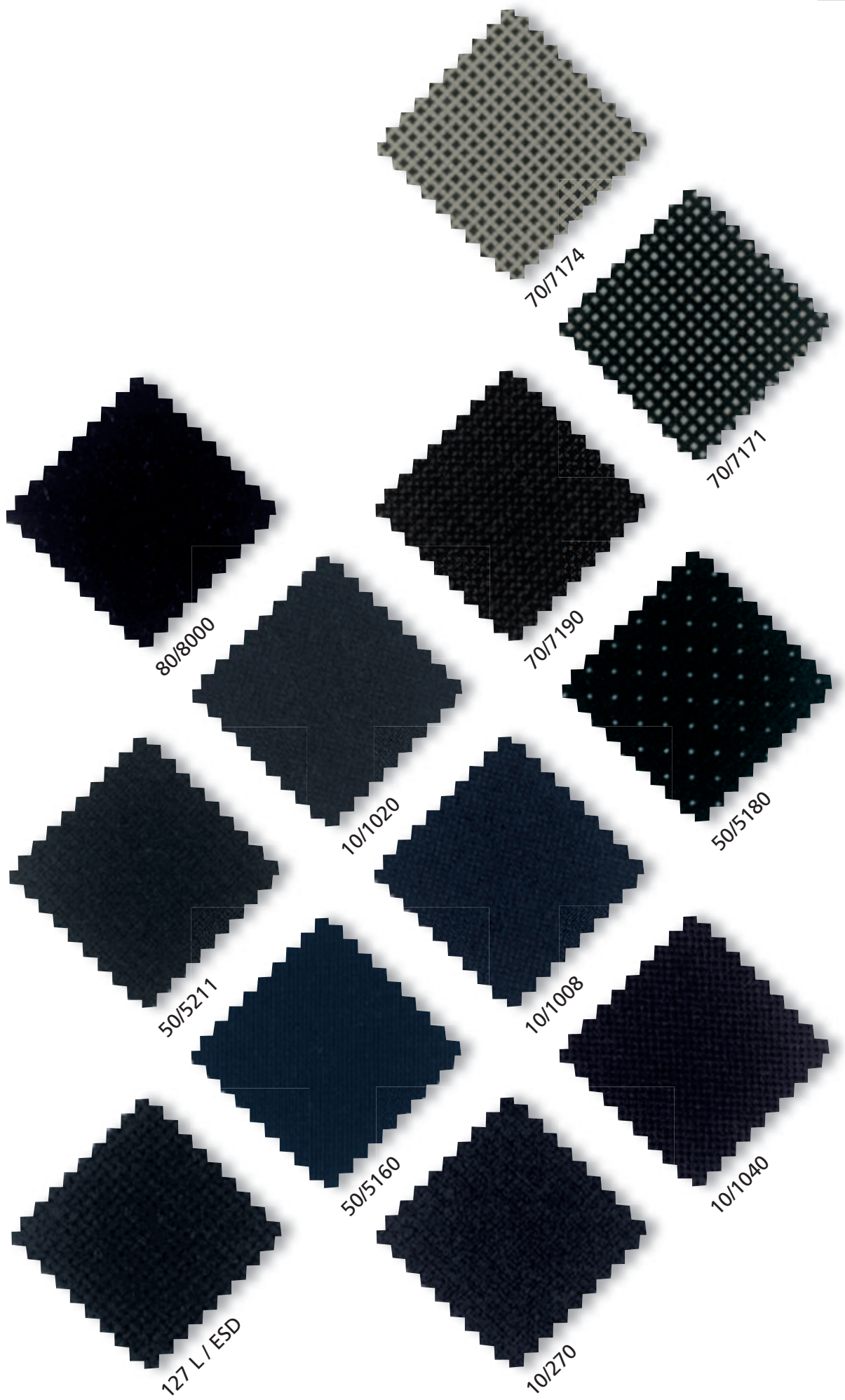
132 L / ESD



70/7170



30/310



Pflegeempfehlungen

Cleaning instructions
Conseils d'entretien
Onderhoudsaanwijzingen

Stoff 10, 50 und 70

Trockenschaum, nicht reiben und nicht bürsten.

Kunstleder 30

Mit feuchtem Tuch abwischen;
keine Säuren bzw. Lösungsmittel verwenden.

Echtes Leder 60

Mit feuchtem Tuch oder handelsüblichen
Spezialpflegemitteln.

Mikrofaser 80

Die meisten Flecken können mit einer weichen Bürste,
mit einem Radiergummi oder mit feinem Sandpapier,
oder durch Verwendung von lauwarmer Lösung aus
Feinwaschmittel / Seifenspäne und Wasser entfernt
werden.

**Eventuelle Farb- und Strukturabweichungen zwischen
den Originalmaterialien und den abgebildeten Mustern
sind drucktechnisch bedingt und können daher nicht als
Reklamationsgrund anerkannt werden.**

Tissu 10, 50 et 70

Bombe nettoyante à mousse sèche.
Ne pas frotter ni brosser.

Boeing 30

Essuyer avec un chiffon humide; ne pas utiliser de
produits acides ou corrosifs.

Cuir 60

Essuyer avec un chiffon humide ou à l'aide d'un produit
spécial pour le traitement des cuirs de préférence incolore.

Micro Fibre 80

Vous pouvez enlever la plupart des taches avec une brosse
fine, une gomme ou un papier de verre fin.
Ou bien en utilisant une solution d'eau tiède avec de la
lessive pour lainages ou du savon.

**Les éventuelles différences de couleurs entre les
matériaux réels et les photos des catalogues sont dues
aux techniques d'impression et ne peuvent donc pas
faire l'objet de réclamations.**

Fabrics 10, 50 and 70

Use dry foam upholstery cleaner; do not rub or brush.

Vinyl 30

Wipe with damp cloth;
do not use chemical solutions.

Leather 60

Wipe with damp cloth, or use commercially available
cleaning agents.

Micro Fibre 80

Cleaning with a soft brush, a rubber or a fine sandpaper,
also by using a warm soapy water and mild detergent.

**Any differences in colour or texture which may occur
between the original materials and the illustrated sam-
ples are due to the printed reproduction and cannot,
therefore, be accepted as cause for complaint.**

Stof 10, 50 er 70

Droogschuim, niet wrijven
en niet borstelen.

Kunstleder 30

Met vochtige doek afnemen; geen zuren,
c.q. oplosmiddelen gebruiken.











Echt leder 60

Met vochtige doek of met
speciale leder-cleaner.

Microvezel 80

De meeste vlekken kunnen met een zachte borstel, gum of
fijn schuurpapier droog uitgeborsteld worden.
Hardnekkige vlekken met een sopje van fijnwasmiddel of
zeep en water.

**Eventuele kleur en Structuurafwijkingen tussen de
originele materialen en de afgebeelde kleurstalen is
mogelijk drucktechnisch onvermijdbaar en kunnen
daarom niet als gereclameerd behandeld worden.**

qualität	nummer	material	entflammbarkeit	gewicht	breite	lichtechtheit DIN EN ISO 105-BO2	reibechtheit DIN EN ISO 105x12	scheuertouren martindale
10	220, 230, 260, 270	100% polyacryl	EN 1021/1 zigarettentest	ca. 560 g/lfm	ca. 138 cm	5-6	nass 4-5 trocken 4-5	37.000
10	1001, 1002, 1005, 1006, 1007, 1008	60% polyacryl 40% polyester	EN 1021/1 zigarettentest	ca. 500 g/lfm	ca. 140 cm	5-6	nass 4 trocken 4-5	60.000
10	1020-1029	100% Xtreme FR 	DIN 4102-B1-M1 EN 1021/1+2 zigarettentest+streichholz	434 g/lfm	ca. 140 cm	6	nass 4 trocken 4	100.000
10	1040-1051	100% polyester	EN 1021/1+2 zigarettentest+streichholz	ca. 530 g/lfm	ca. 150 cm	5	nass 4-5 trocken 4-5	80.000
30	310, 381	88% PVC- compound 12% PES/BW- gewirke 	-	ca. 931 g/lfm	ca. 137 cm	3	nass 4 trocken 5	-
50	119L, 123L 127L, 133L	95% polyacryl 5% PES mit metalfaden punktleitfähig	elektrisch leitfähig ESD	ca. 580 g/lfm	ca. 138 cm	6	nass 4-5 trocken 4-5	40.000
50	132L	11% PES/BW- gewirke 89% PVC- compound 	elektrisch leitfähig ESD	ca. 890 g/lfm	ca. 137 cm	3	nass 4 trocken 4	-
50	5160, 5162 5163, 5164 5200-5205	100% polyester FR 	DIN 4102-B1-M1 / EN 1021/1+2 BS 5852 P2 crib 5 zigarettentest+streichholz	ca. 380 g/lfm	ca. 140 cm	6	nass 4-5 trocken 4-5	50.000
50	5170, 5172 5173, 5174, 5175	100% polyester FR 	DIN 4102-B1 EN 1021/1+2 zigarettentest+streichholz	ca. 400 g/lfm	ca. 140 cm	6	nass 4 trocken 4	100.000
50	5180, 5181	88% polyamid 12% polyester	EN 1021/1+2 zigarettentest+streichholz	ca. 500 g/lfm	ca. 140 cm	6	nass 4 trocken 4-5	300.000
50	5211-5222	95% schurwolle 5% polyamid 	DIN 4102 B2 / EN 1021/1+2 BS 5852 P2 crib 5 / NFP 92-503 M2 zigarettentest+streichholz	ca. 630 g/lfm	ca. 140 cm	5	nass 4-5 trocken 4-5	200.000
60	610, 633, 634, 635, 636, 637	nappa-leder 	(semi-anilin) durchgefärbt	-	-	-	-	-
70	7170-7175	100% polyester FR 	DIN 4102-B1 EN 1021/1+2 zigarettentest+streichholz	ca. 510 g/lfm	ca. 150 cm	5	nass 4 trocken 4	80.000
70	7190-7196	90% schurwolle 10% polyamid 	EN 1021/1+2 BS 5852 part2 crib 5 zigarettentest+streichholz	ca. 435 g/lfm	ca. 140 cm	5	nass 4-5 trocken 4-5	100.000
80	8000-8100	88% polyester 12% polyurethan 	EN 1021/1 zigarettentest	ca. 385 g/lfm	ca. 140 cm	5	nass 4-5 trocken 4-5	100.000

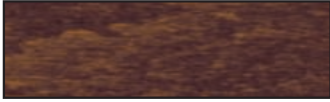
beiztöne | stainings | teintes + lasures | beits kleuren



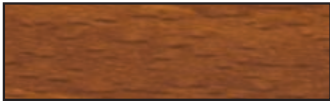
10 | ahornfarbig gebeizt | stained maple wood
teinté érable naturel | ahorn gebeizt



00 | buche natur lackiert | varnished beech wood
hêtre naturel vernis | beuken gelakt



01 | nussbaumfarbig gebeizt | walnut stained
teinté noyer | noten gebeizt



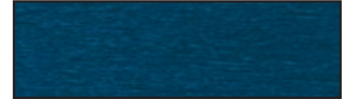
02 | kirschbaumfarbig gebeizt | cherry stained
teinté cerisier | kersen gebeizt



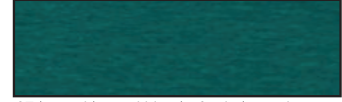
04 | schwarz | black | noir | zwart



05 | rot | red | rouge | rood



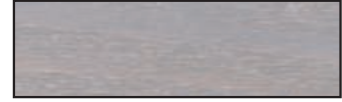
06 | blau | blue | bleu | blauw



07 | petrol | petrol blue | pétrole | petroleum



08 | violett | violet | paars



09 | hellgrau | ligh grey | gris clair | licht grijs

flächendeckend lackiert | opaque varnish | lasure opaque | lakkleuren



2011 tieforange | deep orange
orange foncé | oranje



3020 verkehrrot | traffic red
rouge signalisation | rood



5002 ultramarineblau | ultramarine blue
bleu outremer | blauw



6018 gelbgrün | yellow green
vert jaune | groen



9005 tiefschwarz | jet black
noir ébene | zwart



9016 verkehrsweiß | traffic white
blanc signalisation | wit

eventuelle farb- und strukturabweichungen zwischen den originalmaterialien und den abgebildeten mustern sind drucktechnisch bedingt und können daher nicht als reklamationsgrund anerkannt werden.

any differences in colour texture which may occur between the original materials and the illustrated samples are due to the printed reproduction and cannot, therefore, be accepted as cause for complaint.

les éventuelles différences de couleurs entre les matériaux réels et les photos des catalogues sont dues aux techniques d'impression et ne peuvent donc pas faire l'objet de réclamations.

eventuele kleur en stuurafwijkingen tussen de originele materialen en de afgebeelde kleurstalen is mogelijk druktechnisch overmijdbaar en kunnen daarom niet als gereclameerd behandeld worden.

kunststofffarben tischplatten und arbeitsplatten server
 colours and synthetic dyes for table and server tops
 coloris pour plateau de table avec chant synthétique
 et plateau server
 uitvoeringen voor topbladen en legborden serverkast



120 | hellgrau | light grey | gris clair | lichtgrijs



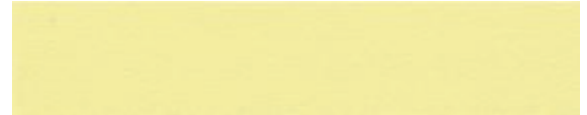
121 | gedecktes weiß | off white | blanc casse | dekkend wit

einlegeboden server
 server shelves
 planche server
 legplank serverkast



122 | anthrazit | anthracite | anthracite | antraciet

tablarplatte
 tablet
 plateau de table
 topblad



123 | gelb | yellow | jaune | geel

server geschlossen
 closed server
 server fermé
 gesloten serverkast



113 | granit dekor | granite | motiv | graniet

eventuelle farb- und strukturabweichungen zwischen den originalmaterialien und den abgebildeten mustern sind drucktechnisch bedingt und können daher nicht als reklamationsgrund anerkannt werden.

any differences in colour texture which may occur between the original materials and the illustrated samples are due to the printed reproduction and cannot, therefore, be accepted as cause for complaint.

les éventuelles différences de couleurs entre les matériaux réels et les photos des catalogues sont dues aux techniques d'impression et ne peuvent donc pas faire l'objet de réclamations.

eventuele kleur en stukturaafwijkingen tussen de originele materialen en de afgebeelde kleurstalen is mogelijk druktechnisch overmijdbaar en kunnen daarom niet als gereclameerd behandeld worden.



viasit
bürositzmöbel gmbh
boxbergweg 4
d-66538 neunkirchen
t +49 (0) 68 21 | 29 08 0
f +49 (0) 68 21 | 29 08 290
www.viasit.com
info@viasit.com

