

Beschreibung

100% Trevira CS
470 g/lf. m,
Breite 140 cm

Prüfungsergebnisse

Scheuerfestigkeit:
100.000 Scheuerhübe,
BS EN ISO 12947-2
(Martindale)
Lichtechtheit:
5, BS EN ISO 105-B02
Methode 2
Pilling:
4-5, BS EN ISO 12945-2
Reibechtheit:
Trocken 4-5, Nass 4-5,
EN ISO 105-X12
Flammschutz:
CAL 117 E
DIN 4102-1 B1
NF P 92-503-507 M1
ÖNORM A 3800-1
B1/Q1/TR1
BS 5852 wenn auf
CMHR-Schaum
montiert
EN 1021-1/-2 wenn auf
PUR-Schaum min.
30 kg/m³ montiert
UNI VF 9175 1IM wenn
auf CMHR-Schaum
montiert

Reinigung

Festverspannte Bezüge:
regelmäßig absaugen,
professionelle Trocken-
reinigung
Abnehmbare Bezüge:

**Description**

100% Trevira CS
470 g/lin. m, width
140 cm (55")

Test results

Abrasion:
100.000 rubs,
BS EN ISO 12947-2
(Martindale)
Lightfastness:
5, BS EN ISO 105-B02
Method 2
Pilling:
4-5, BS EN ISO 12945-2
Fastness to rubbing:
dry 4-5, wet 4-5,
EN ISO 105-X12
Flame resistance:
CAL 117 E
DIN 4102-1 B1
NF P 92-503-507 M1
ÖNORM A 3800-1
B1/Q1/TR1
BS 5852 when
covering CMHR-foam
EN 1021-1/-2 when
covering PUR-foam
density min. 30 kg/m³
UNI VF 9175 1IM when
covering CMHR-foam

Cleaning

Fixed covers: periodical
vacuum cleaning,
professional cleaning
with dry foam
Removable covers:

**Description**

100 % Trevira CS
470 g/m, laize 140 cm

Résultats des tests

Résistance à l'abrasion :
100 000 révolutions
selon, BS EN ISO
12947-2 (Martindale)
Résistance à la lumière :
5, BS EN ISO 105-B02
méthode 2
Boulochage :
4-5, BS EN ISO 12945-2
Résistance au
frottement :
à sec 4-5, mouillé 4-5,
EN ISO 105-X12
Tenue au feu :
CAL 117 E
DIN 4102-1 B1
NF P 92-503-507 M1
ÖNORM A 3800-1
B1/Q1/TR1
BS 5852 sur support
mousse CMHR
EN 1021-1/-2 sur sup-
port mousse polyuré-
thane mini. 30 kg/m³
UNI VF 9175 1IM sur
support mousse CMHR

Entretien

Revêtements non
amovibles : aspirer ré-
gulièrement, nettoyage
à sec professionnel
Revêtements
amovibles :

**Omschrijving**

100% Trevira CS
470 g per l/m,
breed 140 cm

Testgegevens

Slijtvastheid:
100.000 toeren,
BS EN ISO 12947-2
(Martindale)
Lichtechtheid:
5, BS EN ISO 105-B02
Methode 2
Pilling:
4-5, BS EN ISO 12945-2
Wrijftechtheid:
droog 4-5, nat 4-5,
EN ISO 105-X12
Brandvrijheid:
CAL 117 E
DIN 4102-1 B1
NF P 92-503-507 M1
ÖNORM A 3800-1
B1/Q1/TR1
BS 5852 indien op
CMHR-schuim
gemonteerd
EN 1021-1/-2 wanneer
op PUR-schuim wordt
gebruikt moet het
gewicht min. 30 kg/m³
bedragen
UNI VF 9175 1IM wan-
neer op CMHR-schuim
gemonteerd

Reiniging

Vaste bekleding:
regelmatig stofzuigen,
professionele reiniging
met droogschuim
Afneembare bekleding:

**Descripción**

100% Trevira CS
470 g/m de 140 cm
de ancho

Pruebas

Resistencia contra
rozamiento:
100.000 golpes,
BS EN ISO 12947-2
(Martindale)
Resistencia a la luz:
5, BS EN ISO 105-B02
método 2
Pilling:
4-5, BS EN ISO 12945-2
Solidez al rozamiento:
seco 4-5, húmedo 4-5,
EN ISO 105-X12
Protección contra
llamas:
CAL 117 E
DIN 4102-1 B1
NF P 92-503-507 M1
ÖNORM A 3800-1
B1/Q1/TR1
BS 5852 si se monta en
espuma CMHR
EN 1021-1/-2 si se
monta en espuma PUR
de mínimo 30 kg/m³
UNI VF 9175 1IM si
se monta en espuma
CMHR

Limpieza

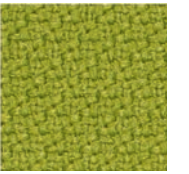
Tapizados fijos: aspirar
regularmente limpieza
profesional en seco
Tapizados
intercambiables:



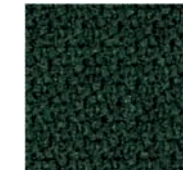
Pitch.



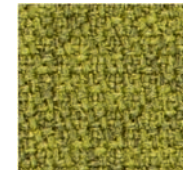
54/24



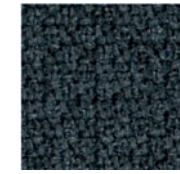
54/22



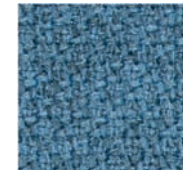
54/32



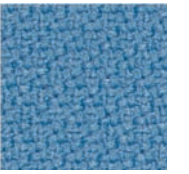
54/33



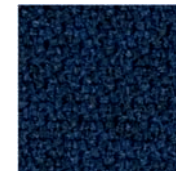
54/31



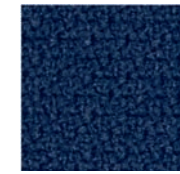
54/30



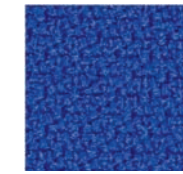
54/21



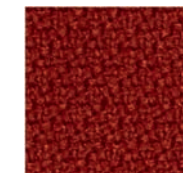
54/29



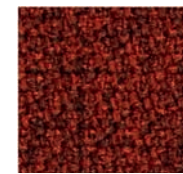
54/19



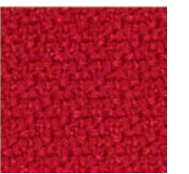
54/20



54/17



54/28



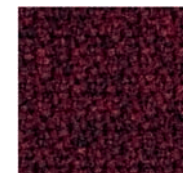
54/18



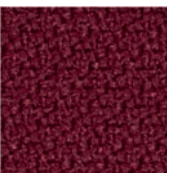
54/26



54/15



54/27



54/16



54/14



54/12



54/13



54/25



54/23



54/11

Die digitalen Muster weichen von den Originaltönen ab.
The digital sample colours differ from the originals.
Les échantillons numériques diffèrent du nuancier original.
De digitale kleurstalen kunnen afwijken van de originele.
Los tonos de colores de las muestras en formato digital, varían de los originales